

NOVA stainless steel toilet paper holder

Reference: **BO-2890**

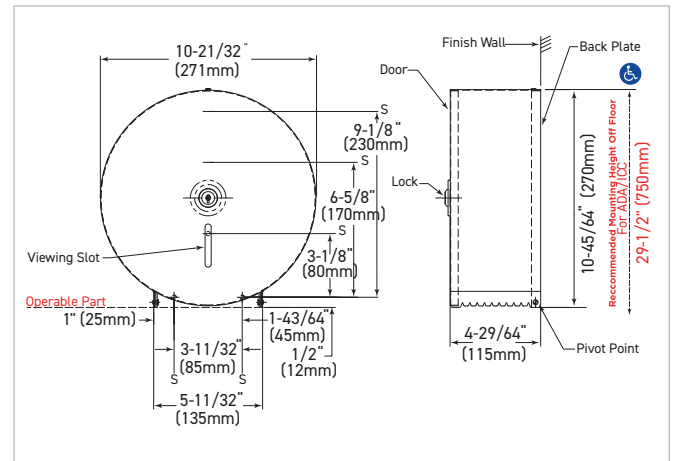


Description

Toilet paper roll holder max 400 m in brushed stainless steel.
Designed for sanitary spaces and public places with high traffic.
Lockable with key and level slot.
Robust and resistant, easy to maintain.

Features

AISI 304 stainless steel, 0.8 mm thickness, brushed finish.
Stainless steel bottom 1.6 mm thickness.
Max roll Ø 255 mm, with rubber adaptors for mandrel
Ø 38, 55 or 76 mm.
Key lock.
Paper level control slot.
Wall mounting.
Dimensions: Ø271 x D115 mm.
2-year warranty.



Reference

Stainless steel dispenser for maxi toilet paper roll

- **BO-2890** brushed stainless steel finish