

Recessed stainless steel 3-in-1 combined paper towel dispenser, hand dryer and waste bin

Reference: **BO-38033**

Description

Recessed wall-mounted stainless steel combination unit with paper hand towel dispenser, high-performance hand dryer and integrated waste bin.

Offers the choice between hand drying by air or paper towel. Sleek design, concealed hinge and flush-fitting locks.

Features

Manufactured in brushed AISI 304 stainless steel.

Door thickness 1.2 mm with 90° folded edges of 14 mm, welded corners and full-height concealed stainless steel hinge, for maximum rigidity. Opening limiter cable.

Two flush-fitting key locks.

Fully welded recessed housing construction.

Dispenser capacity 450 to 600 hand towels depending on format.

DISTRITOP accessory included: continuous single-sheet dispensing, reducing paper consumption by at least 20%, eliminating jamming and multiple-sheet pulling. A guide with return prevents hand towels from falling when the door is opened.

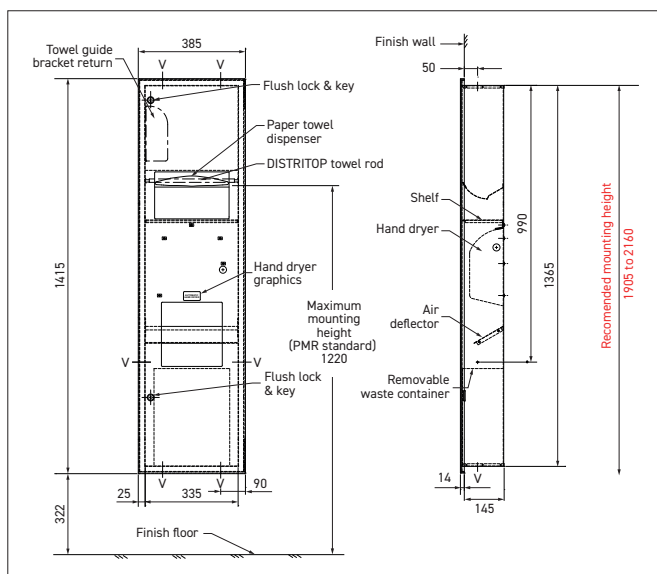
Hand dryer 230V 7 Amp, power 1500-1700 W, Class I.

Air deflector: prevents air from blowing into the waste container.

12,5 L water-proof and removable waste receptacle.

Dim. : W385 x D159 x H1415 mm
(wall recess W350 x D145 x H1380 mm)

2-year warranty.



Reference

Recessed stainless steel 3-in-1 combined unit

- **BO-38033** brushed stainless steel finish

Options

- Narrow version dim. W330 x D158 x H1829 mm
- PMR version hand towel and hand dryer at the same height