

## NOVA Double stainless steel wall-mounted toilet paper holder

Reference: **BO-4288**



### Description

Wall-mounted stainless steel NOVA dispenser with double toilet paper rolls, to prevent paper shortages.

Premium design with curved stainless steel front panel, flush lock.

The additional roll is automatically positioned when the lower roll is finished.

Finished rolls can only be removed after unlocking the door.

Anti-theft: the 2 robust ABS spindles are locked into the dispenser until the door is opened.

### Features

AISI 304 stainless steel quality, 0.8 mm thickness, brushed finish.

One-piece stamped door fixed by a hinge with 2 rivets, equipped with a key lock. Door frame thickness 1.2 mm.

Dispensing mechanism, inner housing and stainless steel cam thickness 1.2 mm.

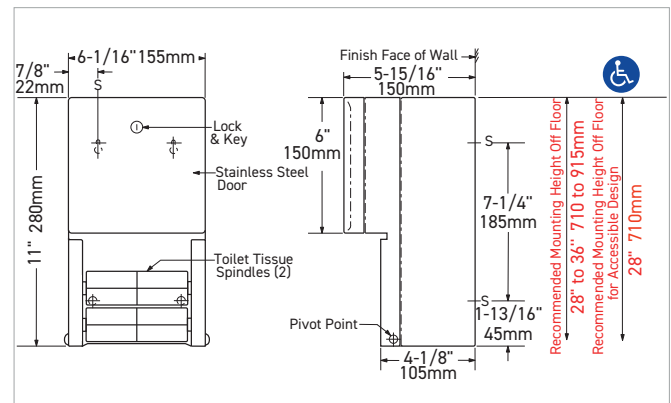
Spindles (2) one-piece ABS molded, very robust.

Anti-theft, retained in the dispensing mechanism when the door is locked.

Dispenses 2 standard toilet paper rolls max. Ø 133 mm (1800 sheets).

Dimensions: W155 x D150 x H280 mm.

2 years warranty.



### Reference

NOVA stainless steel double toilet paper roll dispenser

- **BO-4288** brushed stainless steel finish

