

NOVA stainless steel wall-mounted combination unit paper towel dispenser and waste receptacle

Reference: **B0-43699**

Description

The compact NOVA stainless steel wall-mounted unit, consisting of a paper towel dispenser and a waste receptacle, optimises space and simplifies the layout of sanitary areas.

Premium design with curved stainless steel front panel, flush lock.

High durability for high-traffic areas.

The dispenser features a rounded and hemmed opening to dispense paper towels without tearing them.

DISTRITOP accessory included: continuous single-sheet dispensing, reducing paper consumption by at least 20%, eliminating jams and multiple sheet pulls. A guide with return prevents towels from falling when the door is opened.

Integrated waste bin for discreet and efficient waste management, while contributing to a clean and orderly environment. Removable front panel, with hemmed upper edge for safe handling.

RAPIDCOLLECT accessory included: hidden bag holder that facilitates installation and removal of garbage bags.



*DISTRITOP
included*



*RAPIDCOLLECT
included*

Features

AISI 304 stainless steel quality thickness 0.8 mm, brushed finish.

Rounded edge frame, stamped from one piece, with no visible joints.

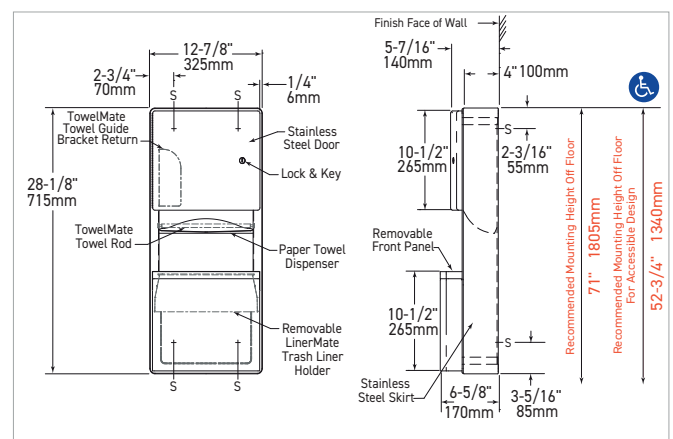
Door stamped from one piece fixed by a full-height stainless steel piano hinge, equipped with a recessed lock with key.

Fully welded recessed housing.

Capacities: - 350 to 475 hand towels depending on size
- 11.3 L waste receptacle

Dimensions: W325 x D170 x H715 mm.

CE. 2-year warranty.



Reference

NOVA wall-mounted combination unit paper towel dispenser and waste receptacle

- **B0-43699** brushed stainless steel finish