

High-capacity recessed soap dispenser or multi-tank system for under-sink installation

Reference: **B0-922**

Description

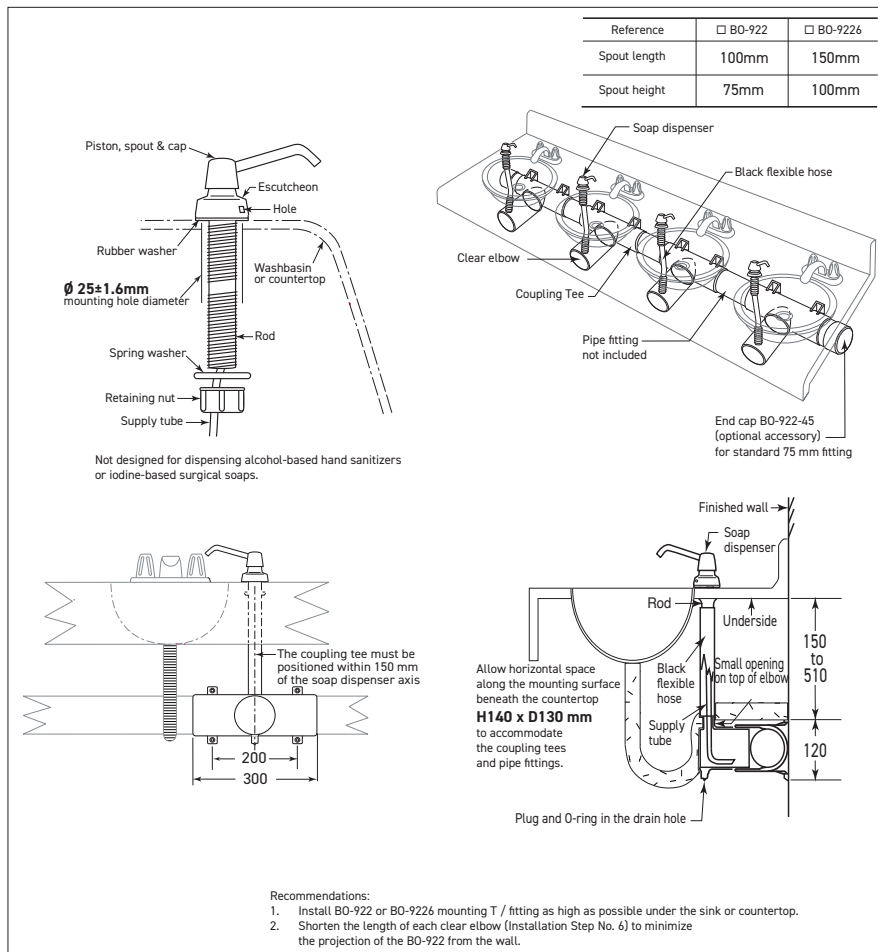
Top-fill recessed liquid soap dispenser with high-capacity tank and allows connection of multiple dispensers to shared tanks. Eliminates frequent refilling, reduces maintenance and labor costs.

Front-facing transparent section allows for soap level monitoring, and the system can be refilled from any connected dispenser.

Includes B0-822 recessed soap dispenser with 914 mm flexible supply tube (adjustable length).

Clear plastic elbow L255 mm for visible soap level and flexible black hose L840 mm, both adjustable in length.

Each unit per sink provides 3.4 L of soap, plus the capacity of the connecting tubes.



References model choices

- **B0-922** spout 100 mm
- **B0-9226** spout 150 mm

Options

- B0-922-45 Side caps (set of 2)
- B0-319586 Connexion hoses