

Touch-free sensor-activated toilet tank

Reference: **DWR-01**

Description

Concealed tank with touch-free activation.

Automatic flushing when the hand is brought close to the infrared sensor.

To be installed in a cabinet or concealed behind a partition.

Suitable for people with reduced mobility.

Flashing light on sensor indicates filling in progress, system operational once filling is complete.

Quick and easy installation.

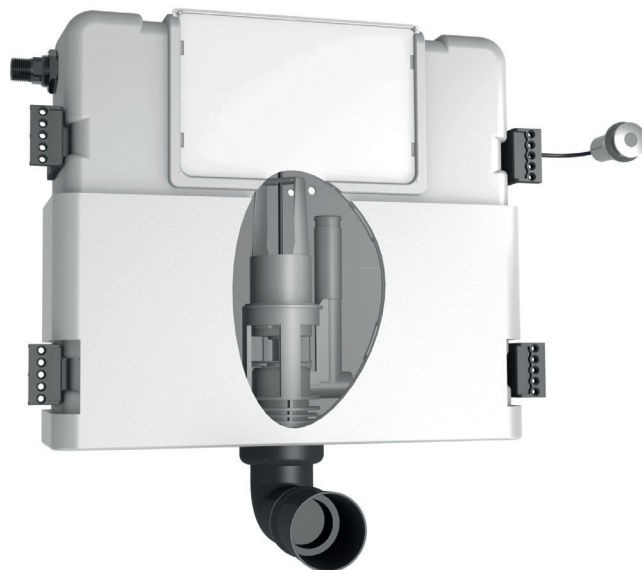
Double flush volume option with 2 detections:

1 full flush detection of 6 liters and 1 half-flush detection of 3 liters (or 4.5 and 3L).

Hygienic flush 72H after last use:

this function optimizes hygiene and prevents bacteria and unpleasant odors.

Contributes to hygienic, clean sanitary spaces and water savings.



Features

Infrared sensor.

Adjustable settings with RES-31 remote control: flush time, activation delay, periodic flush.

Powered by 230/12V 2.5 A IP68 transformer (5 m cable).

Automatic flush if not used for 72H.

High-density polyethylene tank, insulated against condensation.

Tank interior accessible from front or top.

Electromagnet integrated into flush bell.

Chrome-plated brass sensor $\varnothing 35 \times 20$ mm (1.50 m cable).

Includes all accessories and fixings, for lightweight or solid partitions.

Supply sleeve with $\varnothing 55$ mm connection.

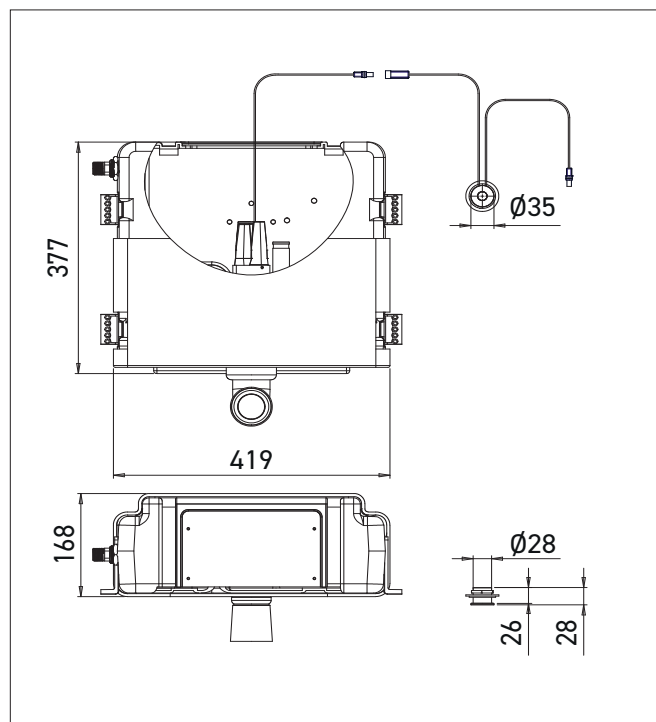
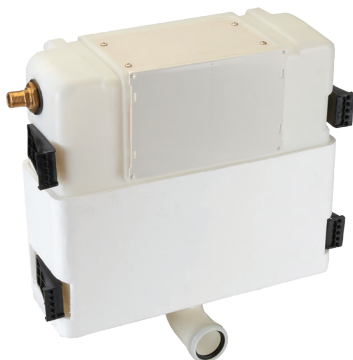
Elbowed WC drain pipe $\varnothing 110$ mm.

Water inlet M1/2".

Recommended pressure 0.2-8 bars.

Dim. W419 x D168 mm x H377.

CE. 3 year warranty.



Reference

Touch-free sensor-activated toilet tank

• **DWR-01** transformer 230/9V

Options

- Detection cable extensions
- RES-31 Remote control
- DWR-02 Double flush volume
- RES-294 IP 68 transformer to supply up to 4 tanks
- RES-295 Junction box to supply up to 10 tanks

