

WC support frame with I-CARO tank and automatic flush

References: **DWS-81-KE / DWS-81-KB**

Description

Wall-hung support frame with concealed tank for floor and wall mounting, with touch-free flush via presence detection. Automatic flush upon user departure.

Optional activation via piezo touch button for easy, vandal-proof operation with a simple touch (invisible mechanism).

Dual flush: if the user has been in front of the sensor for less than 1 minute, economical flush of about 3 liters.

If the user has been in front of the sensor for more than 1 minute, full flush of 6 liters.

AISI 316 stainless steel vandal-proof activation plate, 2 mm thick. Other finishes available upon request.

Automatic flush after each use:

- Eliminates odours when the toilet is not flushed
- No cross-contamination through contact
- Suitable for people with reduced mobility
- Enhances the quality of sanitary installations
- Manual courtesy flush button

Features

Self-adjusting infrared detection or piezo touch button.

Settings adjustable by remote control: sensor range, activation delay, flush volumes, temporary stop, periodic flush.

Powered by 9V battery or 230/9V transformer.

Low battery indicator light for replacement.

Automatic flush if not used for 24 hours.

AISI 316 stainless steel vandal-proof flush plate, brushed finish. Dim. H160 x L240 mm (thickness 2 mm).

Epoxy galvanized steel support frame including all accessories and fixings, for light or solid partition.

C-profile frame in 40/40 mm.

Adjustable frame height from 1180 to 1380 mm.

Galvanized feet, adjustable height from 0-200 mm, rotating.

Bowl mounting with 2 M12 rods.

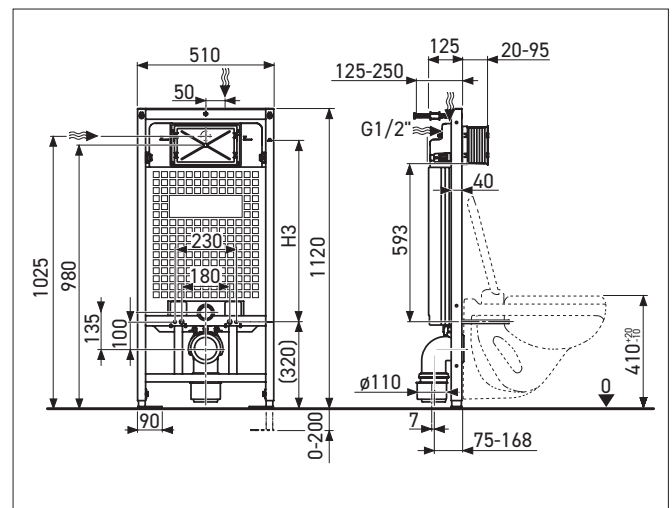
Elbow drainage pipe Ø110 mm.

Flush pipe with Ø55 mm junction connector.

Water inlet 1/2". Pressure 0.2-8 bars.

Dim. W510 x D125 x H1180 mm.

CE. 3-year warranty.



References model choices

I-CARO toilet support frame

- **DWS-81-KE** 230/9V transformer
- **DWS-81-KB** 9V battery

Options

- RES-31 Remote control
- RES-294 IP68 transformer to supply up to 4 I-CARO toilet support frames
- RES-295 Transformer box to supply up to 10 I-CARO 1 toilet support frames