

## Wall-mounted stainless steel drinking fountain

References: **FB-004-S** / **FB-005-S**

### Description

Wall-mounted stainless steel drinking fountain, elegant and robust, specially designed for high-traffic areas such as schools, offices, train stations, department stores, etc.

Timed faucet for mouth rinsing or glass filling with optional gooseneck faucet for filling carafes or bottles.

Backsplash to protect the wall from water and to facilitate cleaning.

Closed underside for invisible drainage and additional protection against vandalism or dirt accumulation.

Rounded shape for easy and quick maintenance.

### Features

AISI 304 stainless steel 1 mm thick, brushed or polished finish.

Mouth rinse faucet and stainless steel goose neck faucet with timed push buttons and adjustable flow rate.

Stamped basin Ø 280 x H40 mm.

Vandal-proof perforated drain and siphon included.

40 mm high backsplash.

Wall-mounted with connections accessible through a lower access panel with security TORX screws.

Invisible drainage 1 1/2" Ø40 mm.

Water inlet M 3/8".

Dim. W345 x D350 x H162 mm (202 mm with backsplash).

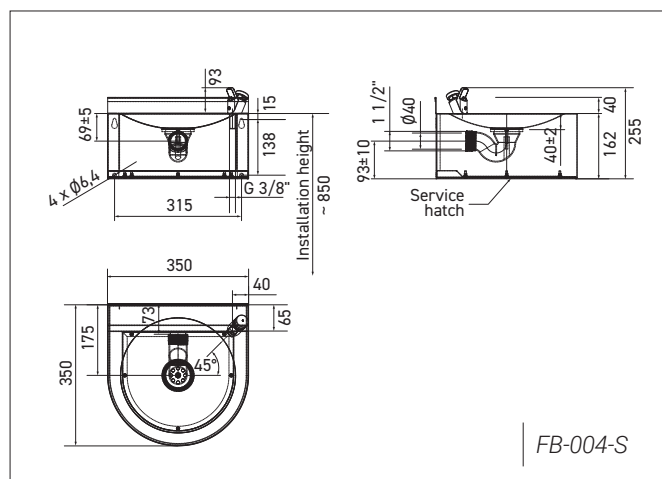
CE. 10-year warranty.



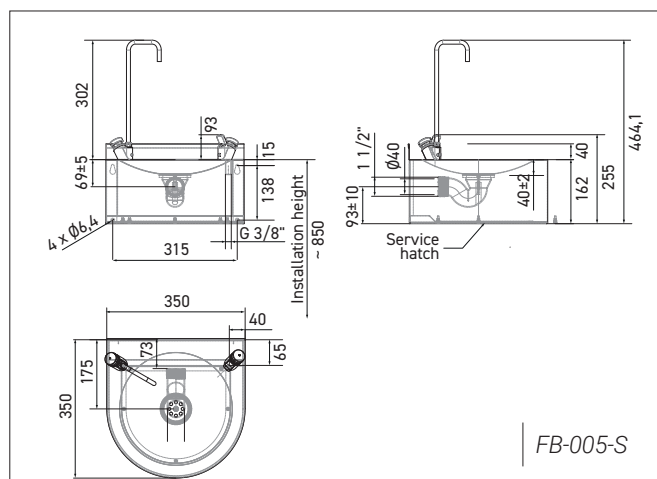
FB-004-S



FB-005-S



FB-004-S



FB-005-S

### References model choices

Wall-mounted stainless steel drinking fountain

- **FB-004-S** with mouth rinse faucet
- **FB-005-S** with mouth rinse faucet and gooseneck spout

### Options

- FB-004ET With touch-free automatic faucet
- FB-006 Suitable for people with reduced mobility
- AISI 316 stainless steel quality

