

SUPRATECH

HYGIENE ON THE MOVE!



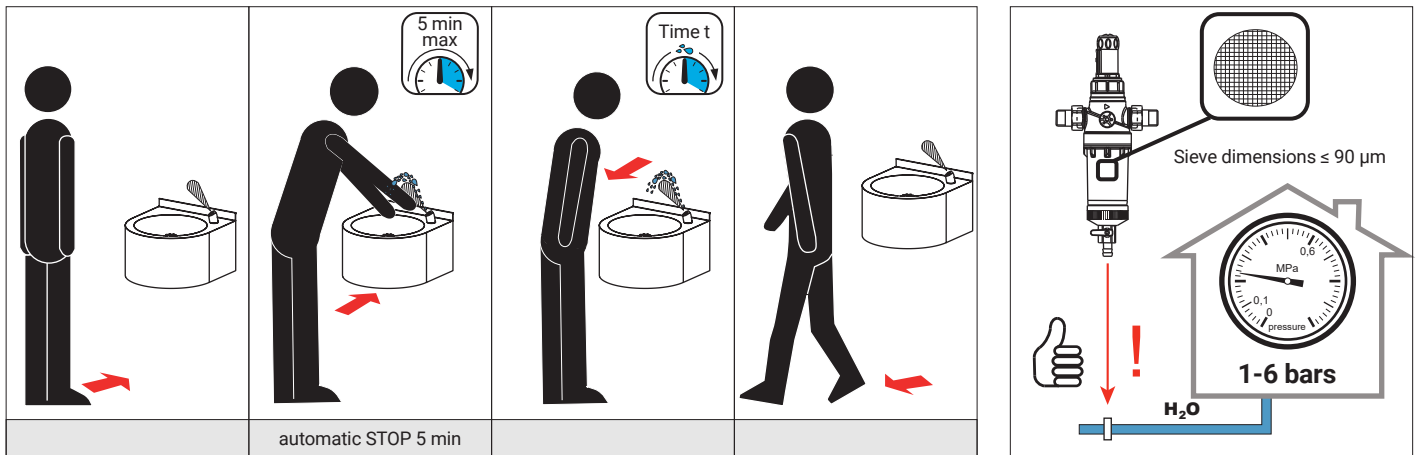
AUTOMATIC DRINKING FOUNTAIN IN STAINLESS STEEL

INSTALLATION AND MAINTENANCE GUIDE

Wall-mounted stainless steel drinking fountain with touch-free faucet

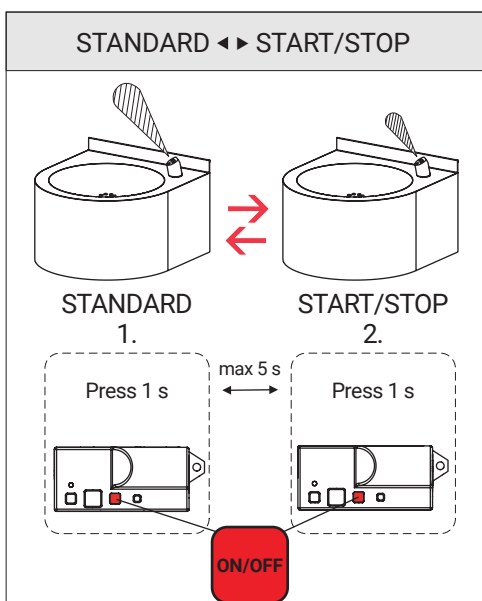
Reference: **FB-004EP**

FUNCTION



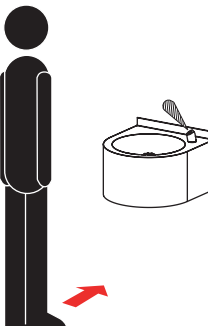
CHARACTERISTICS

<p>100 MIN 300 mm MAX</p> <p>Factory settings 230 mm</p> <p>SLD03: 100 - 300 mm</p>	<p>0,25-7,75 sec</p> <p>Factory settings 0,25 s</p> <p>SLD03: 0,25 - 7,75 s</p>	<p>PRESS</p> <p>ON/OFF</p> <p>SLD03: ON/OFF</p>	<p>HYGIENIC FLUSH INTERVAL</p> <p>Factory settings OFF</p> <p>SLD03: OFF/6/8/12/24/72/168h</p>	<p>HYGIENIC FLUSH DURATION</p> <p>5 - 1200 sec</p> <p>Factory settings OFF</p> <p>SLD03: 5 - 1200 s</p>
-------------------------------------------------------------------------------------	---------------------------------------------------------------------------------	-------------------------------------------------	------------------------------------------------------------------------------------------------	---------------------------------------------------------------------------------------------------------




START/STOP

1.

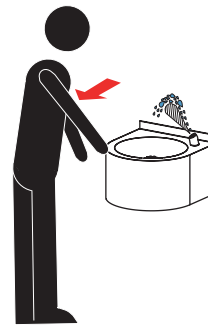


2.




START

3.



4 a.



STOP

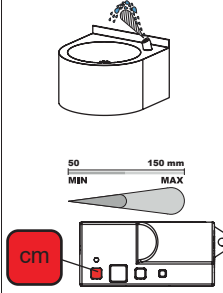
4 b.



Automatic stop

Factory settings 310 s

5.

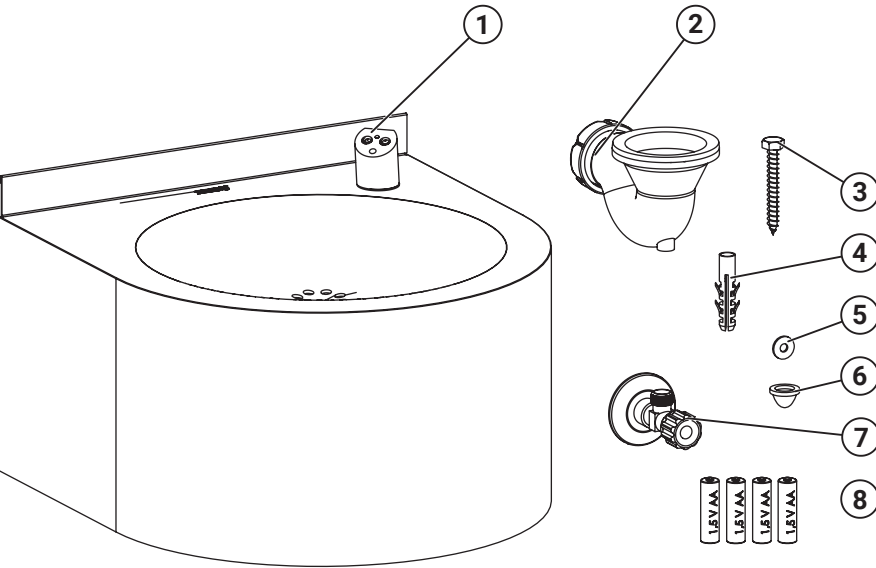


Factory settings 120 mm

SLD03: 10 - 310 s

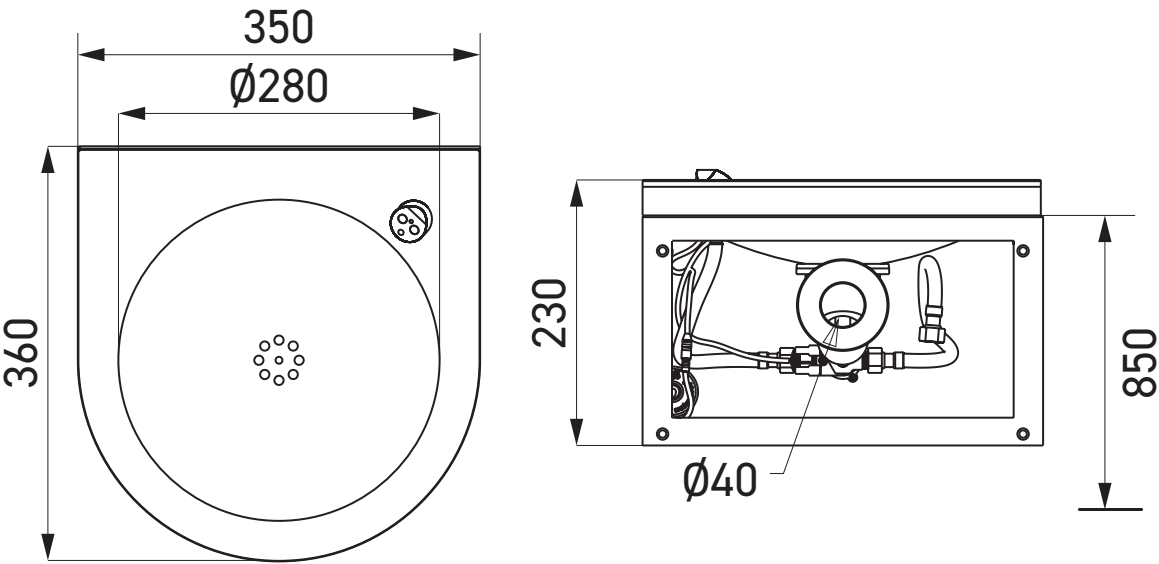
SLD03: 50 - 150 mm

SUPPLIED EQUIPMENT

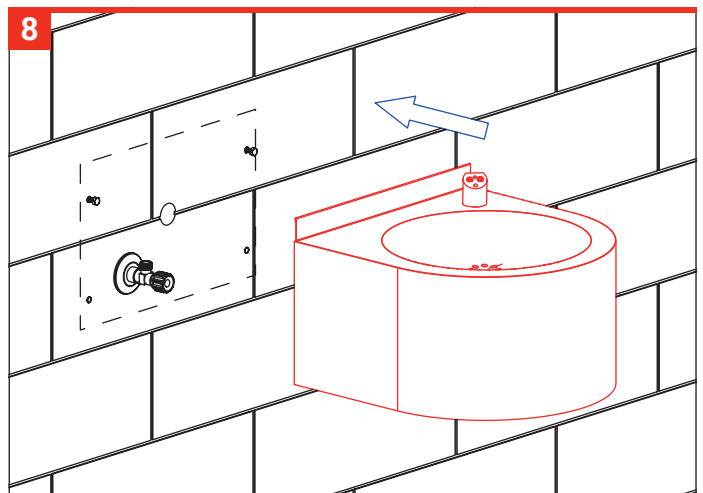
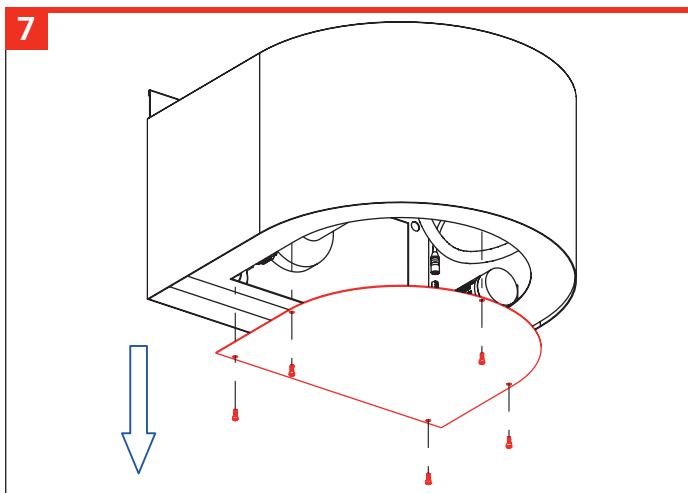
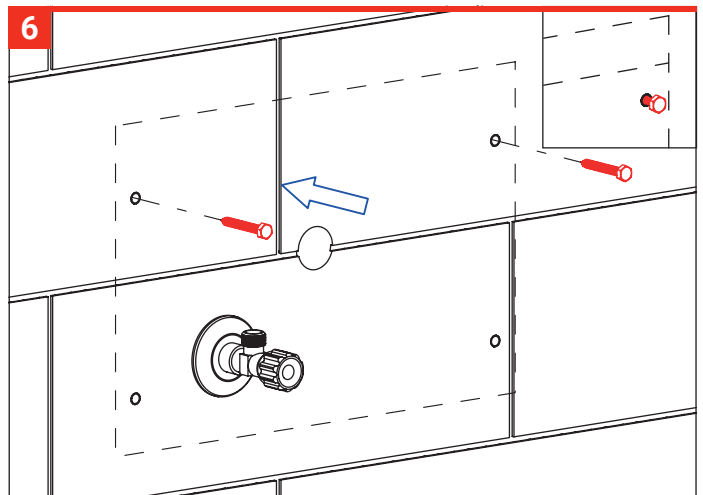
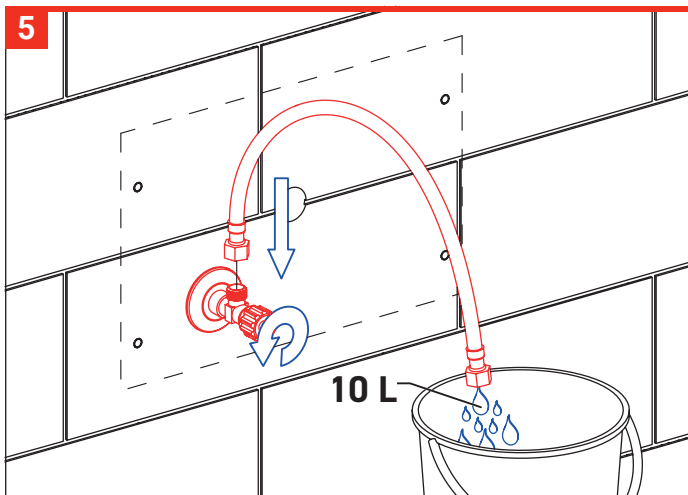
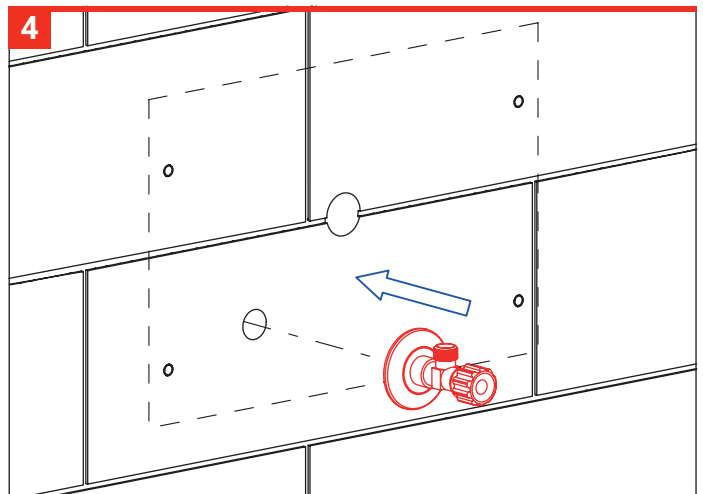
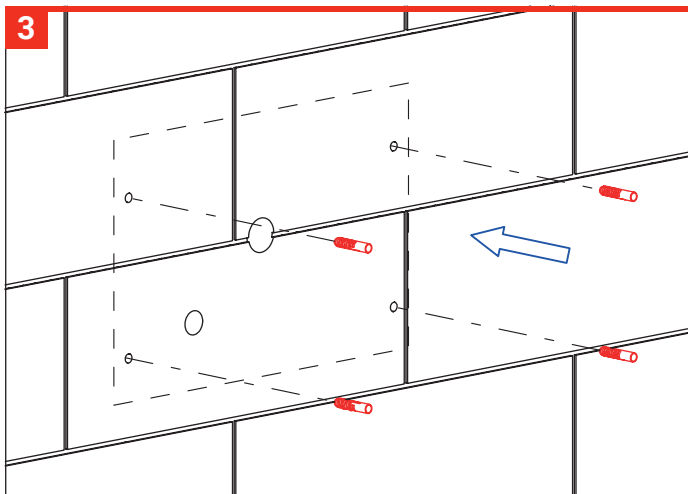
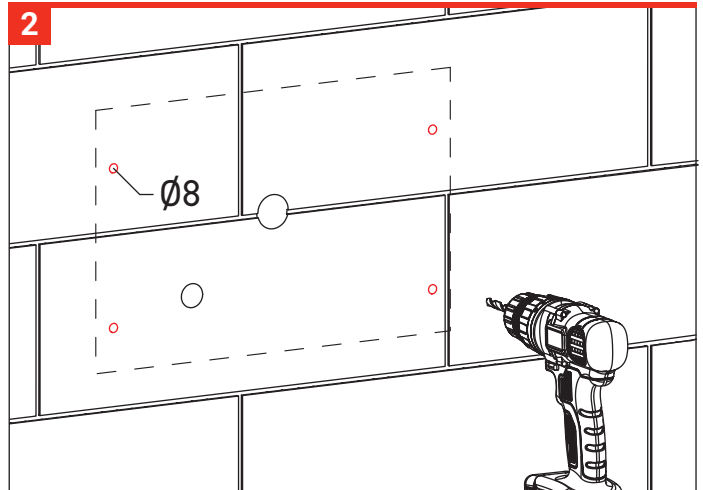
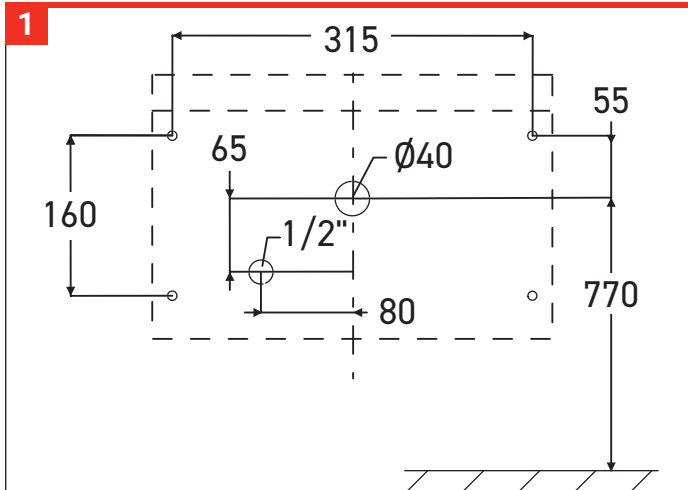


Part n°	Ref	Quantity
1		1
2		1
3	SAN-45532	4
4		4
5		2
6	SAN-46268	1
7	SAN-08540	1
8	SAN-06360	1

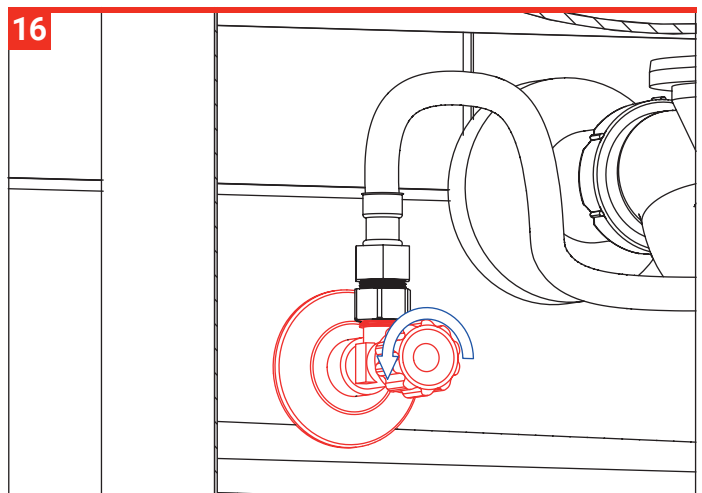
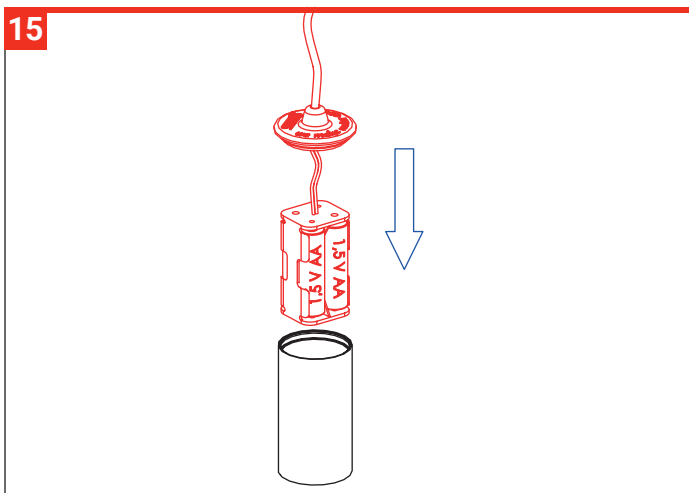
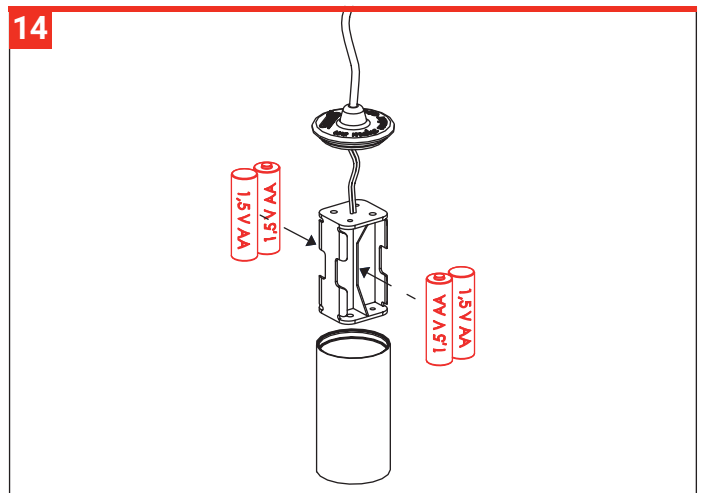
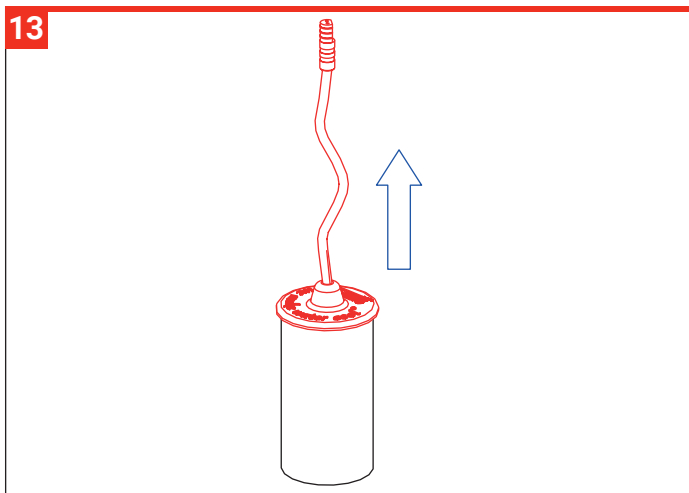
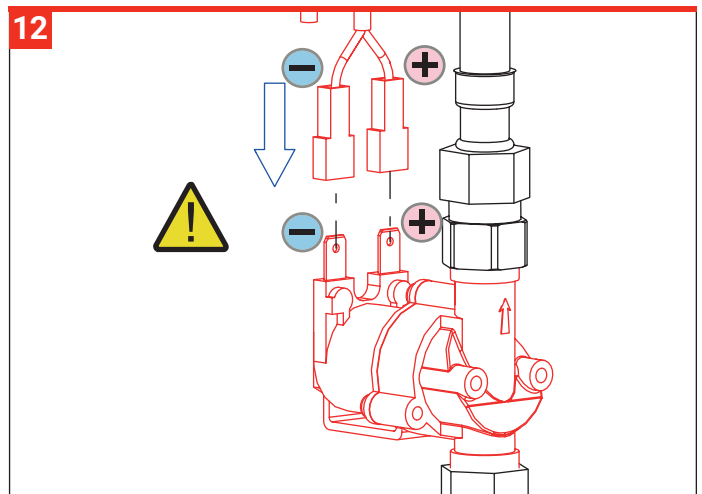
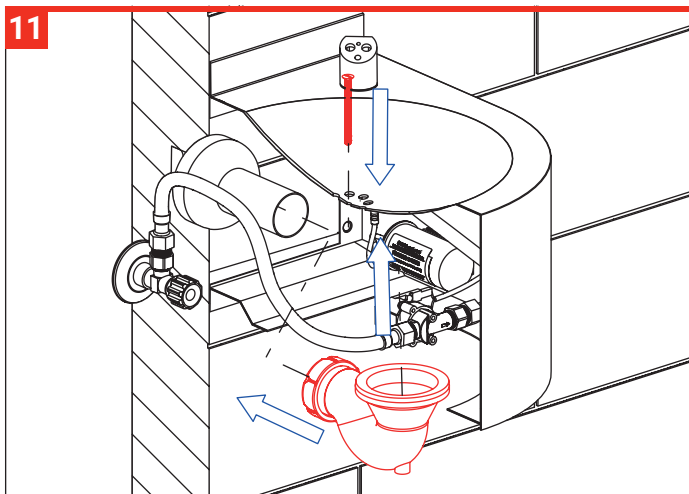
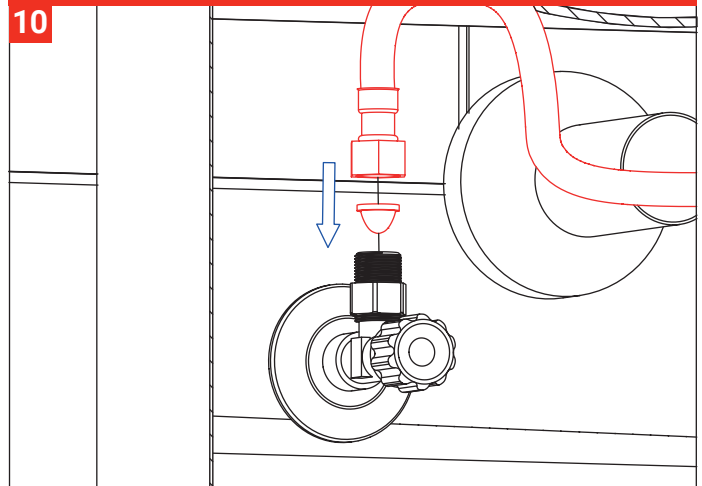
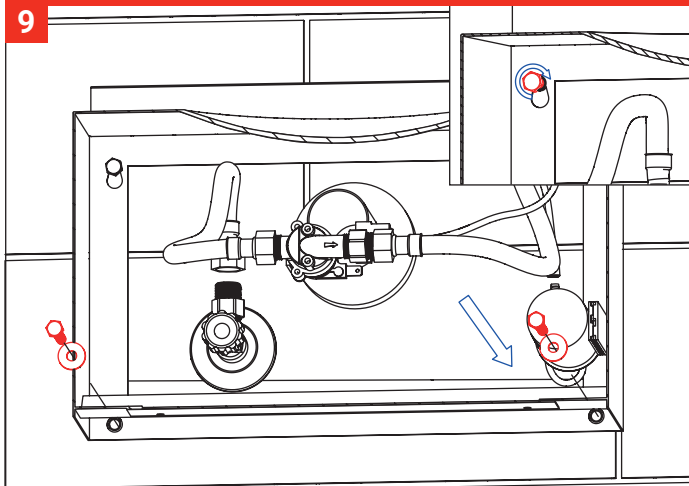
DIMENSIONS



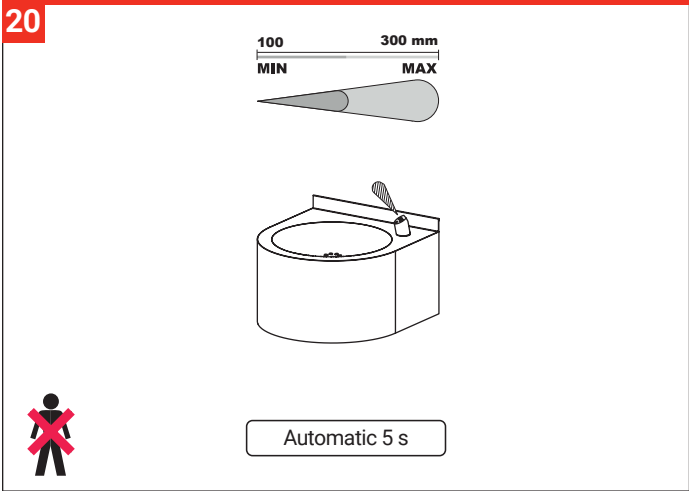
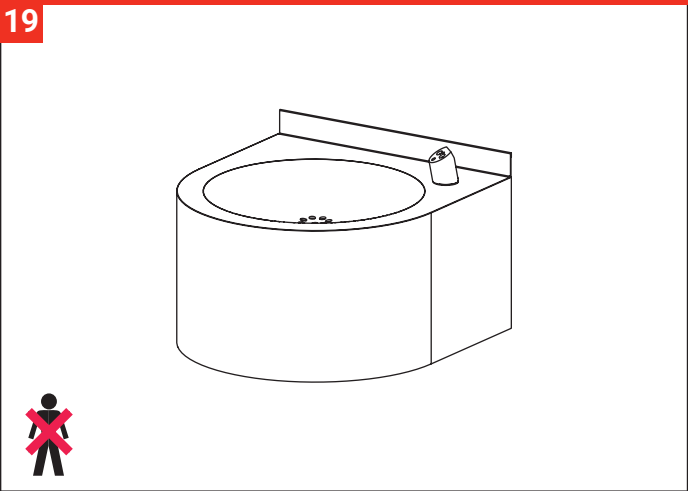
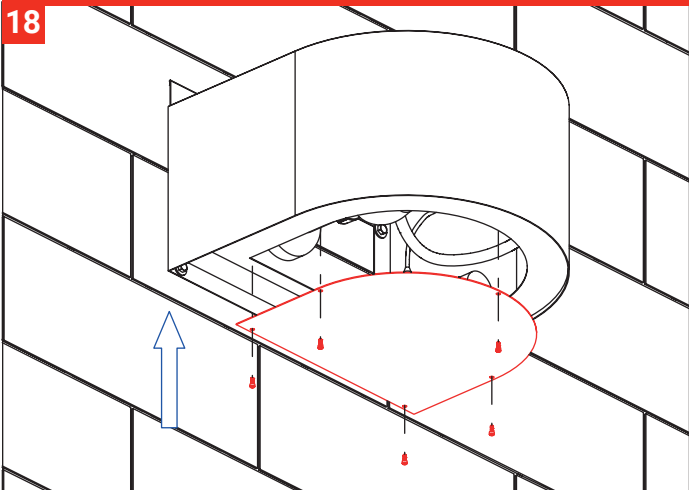
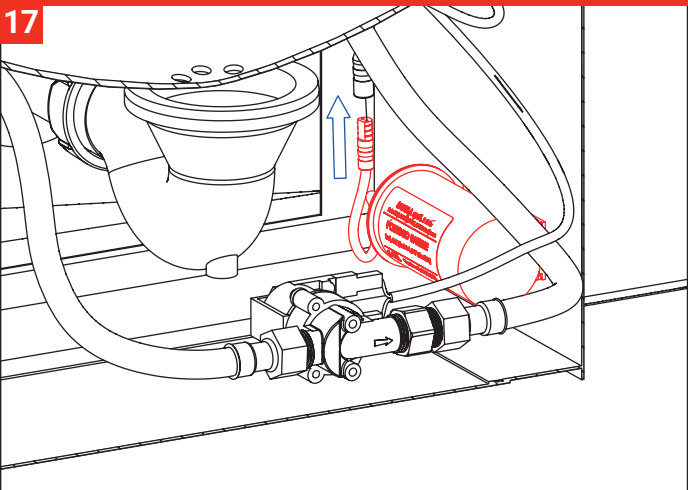
INSTALLATION



INSTALLATION



INSTALLATION



BATTERY CAPACITY CHECK

	INDICATION	ELECTRONIC SYSTEM	BATTERY REPLACEMENT
<div><div><div>AA alkaline</div><div>AA alkaline</div><div>AA alkaline</div><div>AA alkaline</div></div><div>10 - 0 %</div></div> <div></div>	ON	RECOMMENDED	
<div><div><div>AA alkaline</div><div>AA alkaline</div><div>AA alkaline</div><div>AA alkaline</div></div><div>0 %</div></div> <div></div>	OFF	NECESSARY	

MAINTENANCE

It is recommended to check the solenoid valve filter once a year to avoid build-up in the diaphragm. It is also a good idea to check once a year that all screws and connections are tight and secure. All stainless steel components should be cleaned with soapy water and a soft cloth only. It is strictly forbidden to use aggressive and abrasive products. It is necessary to comply with local regulations for the disposal of packaging. The manufacturer guarantees that this product complies with regulations 73/23/EEC and 92/31/EEC.

RECOMMENDED ACCESSORIES

Ref. **SLD03**: remote control for setting adjustments
Ref. **DP-66**: set of 4 pcs. alkaline batteries

NOTES

This image shows a blank sheet of white paper with horizontal ruling lines. The lines are evenly spaced and run across the width of the page. There are no margins, text, or other markings on the paper.

SUPRATECH

AUTOMATED SYSTEMS - SANITARY ACCESSORIES - STAINLESS STEEL SANITARY WARE

2, rue des Cyprès - 37240 Bossée - France
Tél: +33 (0)2 47 92 23 31 - info@autosanit.com
www.autosanit.com



02.2026