

## Refrigerated free-standing stainless steel drinking fountain

References: **FO-B01 / FO-B02**

### Description

Refrigerated stainless steel drinking water fountain, with direct expansion ice bank cooling system.

Highly efficient cooling technology, capable of chilling considerable quantities of water at a constant dispensing temperature.

2 stainless steel coils are immersed in a water reserve: one coil contains the refrigerant gas, turning the water in this reserve into ice, while drinking water circulates inside the other coil.

The cooling water never comes into contact with the drinking water.



### Features

Drinking fountain in AISI 304 stainless steel, 1 mm thickness, brushed and polished finish.

Mouthwash faucet and optional second gooseneck spout.

Mains-powered 230V 50-60 Hz.

Time-flow activation via push button.

Ø280 x H40 mm one-piece pressed basin.

Static refrigeration system.

R134A refrigerant gas (CFC-free).

Cold water temperature adjustable by thermostat.

Refrigeration output 210 W.

Fountain supplied with 3 adjustable levelling feet.

Floor or wall mounting.

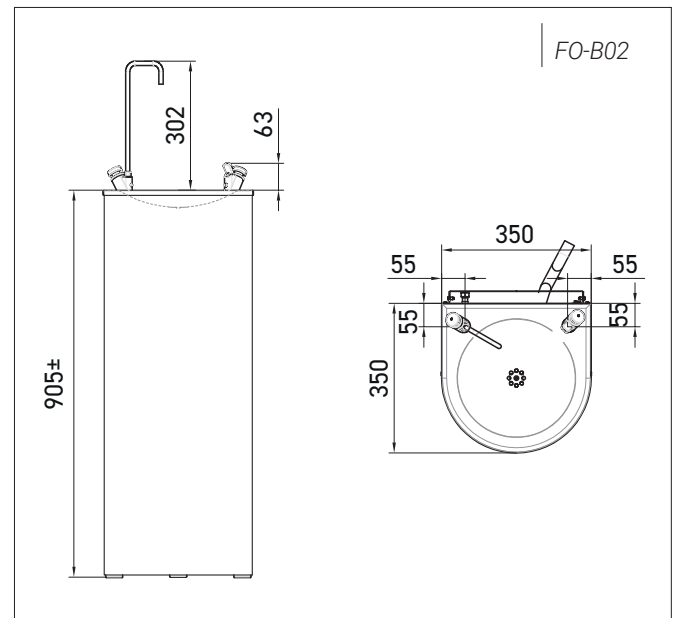
Fixings supplied (screws, plugs and wall-mounting bracket).

M3/8" water inlet. 1 1/4" waste outlet.

Dim.: W350 x D350 x H905 mm  
(1200 mm with gooseneck spout).

Weight 23.5 kg.

CE.



### References model choices

Refrigerated stainless steel drinking fountain on a pedestal

- **FO-B01** with mouthwash faucet
- **FO-B02** with mouthwash faucet and gooseneck faucet

### Options

- Touch-free faucet
- AISI 316 stainless steel
- Chilled water on one spout and normal water on the other spout
- Black or white colour