

## LAGOON free-standing stainless steel circular fountain washbasin with touch-free faucets

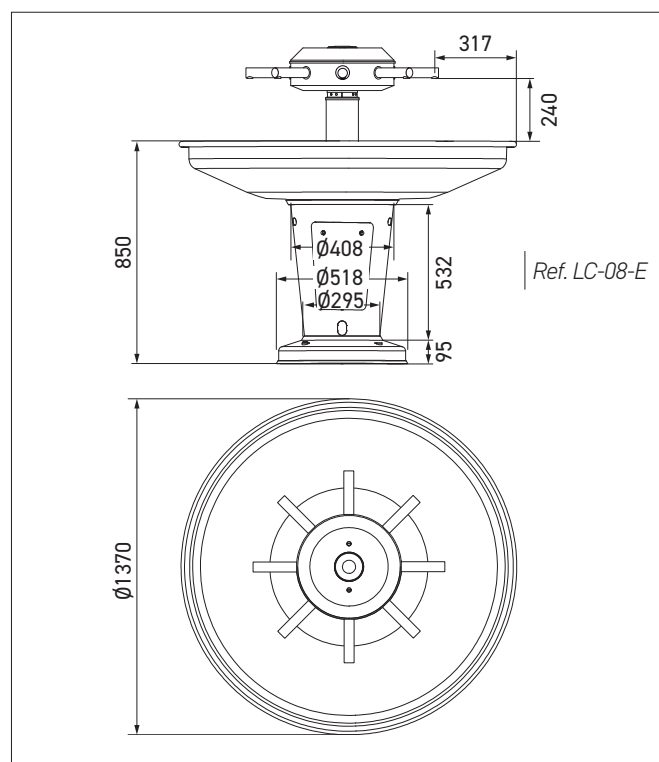
References: **LC-04-E / LC-06-E / LC-08-E**

### Description

Free-standing circular stainless steel communal washbasin with 4, 6, or 8 touch-free faucets, for cold or pre-mixed water. Reduces risk of cross-contamination and saves on water. Space-saving: optimizes available space, allowing smooth circulation around the washbasin. Robust for intensive use, it combines hygiene, safety, and user comfort. The circular, pressed parabolic-shaped basin ensures optimized water flow and prevents splashing. Easy installation with a single connection for water supply and drainage. Optional soap dispensers available.

### Features

Circular communal washbasin made from AISI 304 stainless steel, polished/satin finish, basin thickness 2 mm (leg 2.5 mm). Faucets with infrared sensor and pre-assembled pipes with tested sealing. Powered by batteries or transformer. Security stop after 90 seconds without interruption. 6 LPM flow rate (3 LPM or 1.9 LPM option). Periodic hygiene rinse. Soap dispensers with 6L tank in option (x2, 3 or 4), with touch-free sensor and low soap level indicator LED on transformer powered version; push-button version for battery-operated faucets. Stainless steel leg with inspection panel for connecting water supply and drainage. Zinc-coated steel anchor bolts. Three seals: with the floor, between the leg, base, and basin. Water supply via M1/2" threaded shut-off valve. Drainage with 2" (Ø 50 mm) drain trap. Dimensions: Ø 995 / 1130 or 1370 x H1250 mm (basin height 850 mm).



### References model choices

LAGOON free-standing circular fountain washbasin

- **LC-04-E**      **Ø995 mm - 4 faucets - battery powered**
- **LC-04-E-T**    **Ø995 mm - 4 faucets - transformer powered**
- **LC-06-E**      **Ø1130 mm - 6 faucets - battery powered**
- **LC-06-E-T**    **Ø1130 mm - 6 faucets - transformer powered**
- **LC-08-E**      **Ø1370 mm - 8 faucets - battery powered**
- **LC-08-E-T**    **Ø1370 mm - 8 faucets - transformer powered**

### Options

- Integrated soap dispensers with 6L reservoir and low soap level indicator LED (transformer powered) ref. ...-S
- Push-button soap dispensers for battery-operated faucets
- Remote control for faucet sensor settings ref. RES-31
- Basin heights: raised 950 mm / children 500, 600, or 650 mm / PRM accessible 830 mm (in white synthetic marble)
- Integrated thermostatic pre-mixer ref. ...-TH
- Basin in white synthetic marble
- Stainless steel basin Ø 995 mm for 6 faucets or Ø 1370 mm for 8 faucets (depending on spout length)
- Colored base and/or top (RAL shades available upon request)
- Paper towel dispenser support ref. INT-DS42
- Soap tray, nail brushes, on central column ref. INT-ST
- Stainless steel tube concealing top feed (water supply from ceiling) ref. INT-CA2
- Other faucets: touch-free, manual, mixers...

