

Vandal-proof stainless steel wall-mounted washbasin with concealed drainage

Reference: **LM-009-S**



Description

Wall-mounted stainless steel washbasin with fully enclosed conical protection apron, with access panel and concealed plumbing.

Pressed basin with a drip-proof rim along the entire edge that directs water towards the drain, reducing the risk of slipping. Rounded edges prevent injuries.

Aesthetic, robust and durable for high-traffic public areas or installations requiring enhanced security.

Vandal-proof.

Features

AISI 304 stainless steel, brushed finish, thickness 1.2 mm.

Basin \varnothing 320 x H140 mm. No overflow. Anti-drip rim.

1 1/4" drain with trap supplied.

Concealed 1 1/4" \varnothing 32 mm waste outlet. Wall-mounted fixing.

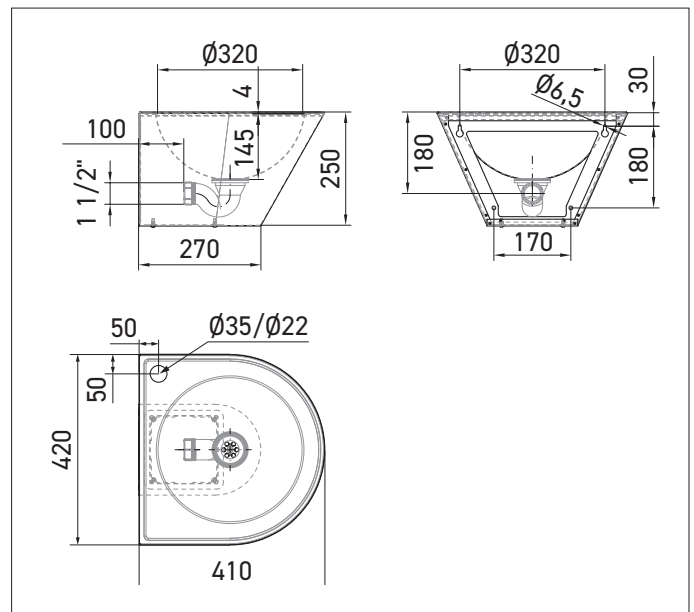
Access panel with security Torx pin screw.

Integrated earthing.

Dimensions: W420 x D410 x H250 mm.

CE. Compliant with standard EN 14688.

10-year warranty.



Reference

Vandal-proof stainless steel wall-mounted washbasin

- **LM-009-S** brushed stainless steel finish

Options

- Faucet hole \varnothing 22 mm (ref. ...-T2D) or \varnothing 35 mm (ref. ...-T1D) on the right (on the left upon request).
- Mounting by threaded rods through the partition.