

## Wall-mounted stainless steel corner washbasin

Reference: **LM-017-S**



### Description

Wall-mounted corner washbasin in stainless steel combining robustness, sleek design and reduced footprint.

Welded construction without joints with rounded edges, facilitates cleaning.

### Features

AISI 304 stainless steel quality, brushed finish, 1.2 mm thickness.

Wall-mounted.

Rounded edges.

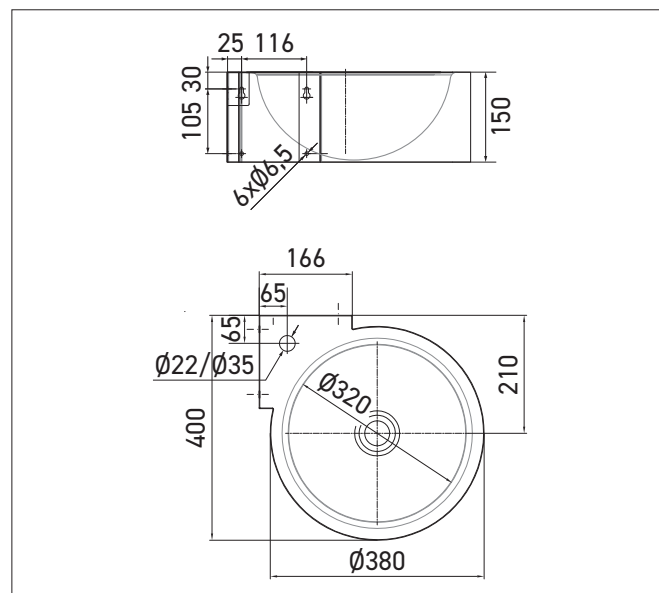
Standard 1 1/2" threaded drainage.

Fixings included.

Dim. W400 x D400 x H150 mm.

Compliant with EN 14688 standard.

CE. 10-year warranty.



### Reference

Individual wall-mounted corner washbasin

- **LM-017-S**      **Brushed stainless steel finish**

### Options

- Faucet hole Ø 22 mm (Ref.: ...-T2)  
or 35 mm (Ref.: ...-T1)
- Overflow hole