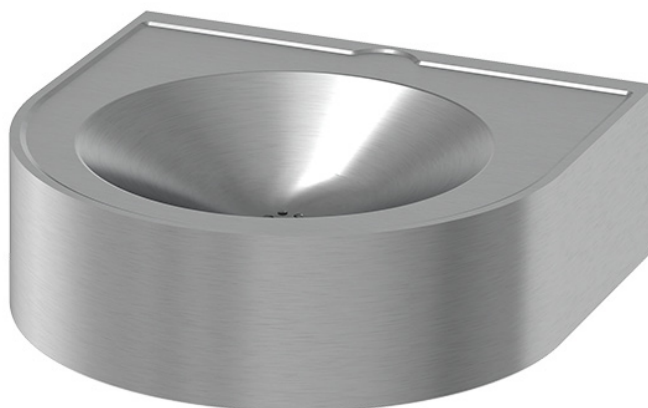
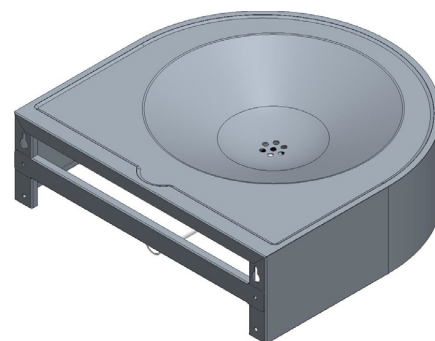


## Wall mounted wash basin in stainless steel PRM



Stainless steel quality AISI 304 18/10 brushed finish,  
1,5 mm thickness (stamped bowl 1 mm thickness).  
Round shape easy maintenance, with a drip-free edge.  
Perforated drain (more hygienic without flange plug).  
Basin waste elbow outlet  $\varnothing$  32 mm. Vanity bowl  $\varnothing$  360 x H 70 mm.  
Dim. : 500 x 495 x H150 mm



**Options:** tap hole, underneath closed with a service hatch or wall mounted fixation by threaded rods.

### Reference:

**LM-115** Brushed finish

