

EXTREME L stainless steel electronic faucet

References: **RES-106-S1** / **RES-107-S1**

Description

Electronic faucet with extended spout and infrared detection for cold or pre-mixed water supply, in brushed AISI 316 stainless steel.

Recommended for installations where ease of maintenance and durability are prioritized (resistant to scratches, UV, and fingerprints...).

This faucet is designed for an easy installation and upkeep. Electronic faucets reduce water consumption, save energy, and optimize sanitary hygiene.

Features

Infrared sensor with optimised presets, adjustable with remote control (detection range, flow duration, periodic flushing, temporary stop...).

Powered by 9V battery or 230/9V transformer.

IP67 dual power input box, when powered by transformer: a built-in back-up lithium battery in the solenoid valve ensures uninterrupted operation in the event of a power outage (not included).

Sensor includes a low battery LED indicator.

Security stop after 90 seconds without interruption.

Periodic hygiene rinse.

Chrome brass faucet and 176 mm spout.

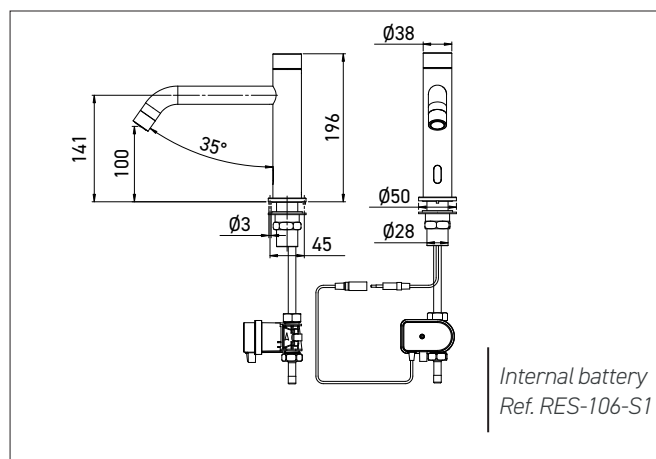
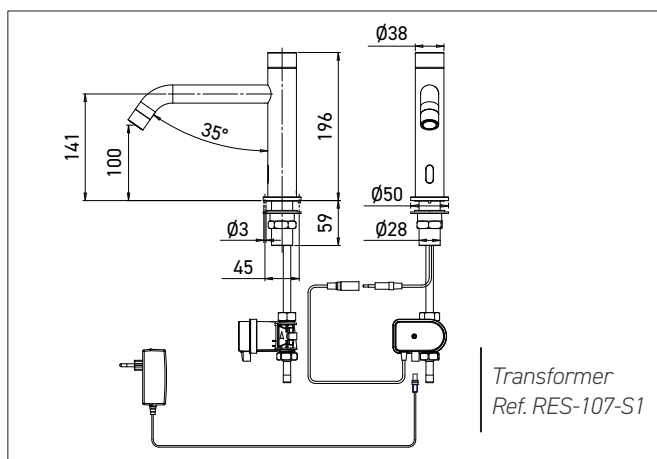
Adjustable NEOPERL aerator to optimise jet direction, with limited flow rate of 6 LPM (3 LPM, 1.9 LPM or 1.3 LPM on demand).

M1/2" external solenoid valve.

Hot and cold water supply.

Operating pressure: 0.3 – 8.0 bars. / Max. temperature 70°C.

CE. ACS. 3 year warranty.



References model choices

EXTREME L stainless steel electronic faucet

- **RES-106-S1** 9V battery
- **RES-107-S1** 230/9V transformer

Options

- RES-31 Remote control
- RES-294 IP 68 transformer to supply up to 4 faucets
- RES-295 Junction box to supply up to 10 faucets
- RES-298 IP68 bare wire transformer
- Limited flow rate 1.3, 1.9 or 3 LPM
- Matching soap dispenser

