

EXTREME L electronic faucet

References: **RES-106** / **RES-107**

Description

Electronic faucet with extended spout and infrared detection.

The vandal-proof brass construction allows for safe installation in high-risk areas.

This faucet is designed for an easy installation and upkeep.

Electronic faucets reduce water consumption, save energy, and optimize sanitary hygiene.

Features

Infrared sensor with optimised presets, adjustable with remote control (detection range, flow duration, periodic flushing, temporary stop...).

Powered by an integrated or external 9V battery under the sink, or a 230/9V transformer.

IP67 dual power input box, when powered by transformer: a built-in back-up lithium battery in the solenoid valve ensures uninterrupted operation in the event of a power outage (not included).

Sensor includes a low battery LED indicator.

Security stop after 90 seconds without interruption.

Periodic hygiene rinse.

Chrome brass faucet and 176 mm spout.

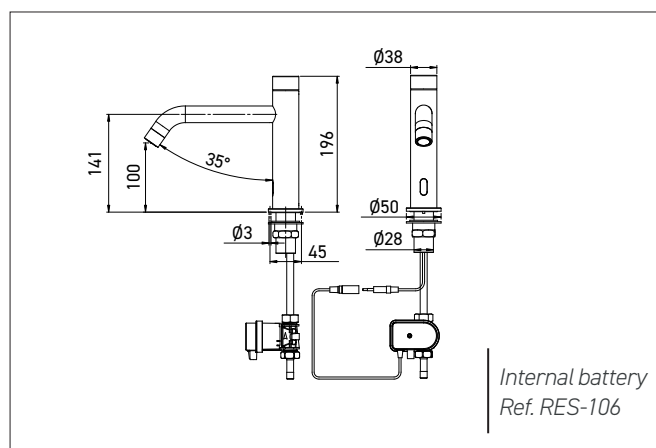
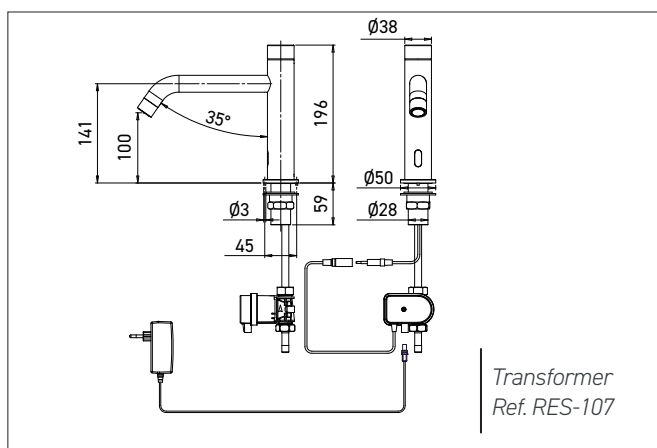
Adjustable NEOPERL aerator to optimise jet direction, with limited flow rate of 6 LPM (3 LPM, 1.9 LPM or 1.3 LPM on demand).

External solenoid valve M1/2".

Hot and cold water supply.

Operating pressure: 0.3 – 8.0 bars / Max. temperature 70°C

CE. ACS. 3 year warranty.



References model choices

EXTREME L electronic faucet

- **RES-106** 9V battery
- **RES-107** 230/9V transformer

Options

- RES-31 Remote control
- RES-294 IP 68 transformer to supply up to 4 faucets
- RES-295 Junction box to supply up to 10 faucets
- RES-298 IP68 bare wire transformer
- Finishes: mat black, brushed nickel PVD, mat gold antique bronze PVD, copperPVD (contact us)
- Limited flow rate 1.3, 1.9 or 3 LPM
- Matching soap dispenser

