

## AKWATIC wall-mounted electronic mixer tap

References: **RES-260** / **RES-262**

### Description

Wall mounted electronic faucet with infrared detection for cold and hot water, with integrated 9V battery or transformer.

Sensor, solenoid valve, and battery integrated in the spout.

Minimalist design, high quality, and vandal-proof for hygienic, safe, and water-saving sanitary facilities.

### Features

The unit has a self-adjusting infrared sensor which can also be adjusted by remote control (sensor range, flow time, hygiene rinse, temporary off, safety time, reset...).

Powered by 9V battery or 230/9V transformer.

Sensor includes a low battery LED indicator.

Security stop after 90 seconds without interruption.

Periodic hygiene rinse.

Chrome-plated solid brass spout, L244 mm Ø45 mm.

Adjustable NEOPERL aerator to optimise jet direction, with limited flow rate of 6 LPM (3 LPM, 1.9 LPM or 1.3 LPM on demand).

Limescale protection.

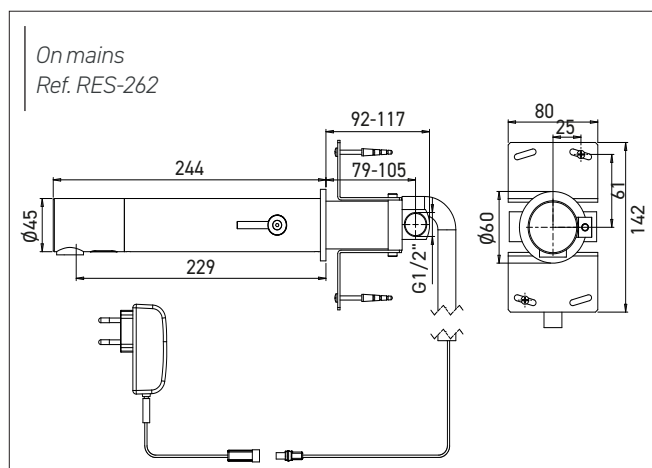
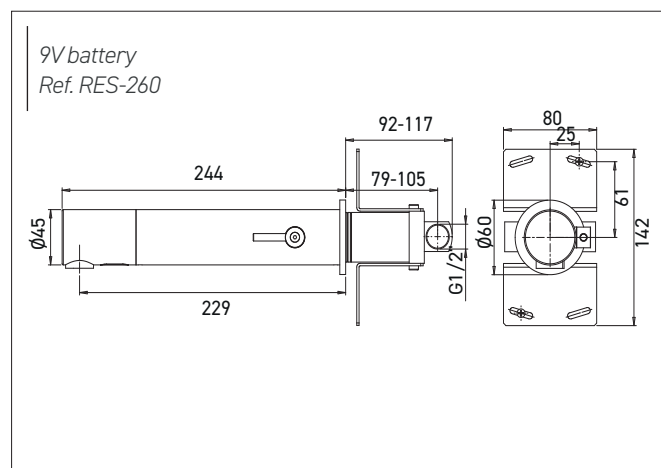
Battery and solenoid valve integrated into the body of the faucet, allowing maintenance from the front.

F1/2" water inlet on flush-mounted brass base.

Cold / hot water supply.

Operating pressure: 0.5 – 8.0 bars. / Max. temperature 70°C.

CE. ACS. 3 year warranty.



### References model choices

AKWALINE electronic faucet

- **RES-160** 9V battery
- **RES-162** 230/9V transformer

### Options

- RES-31 Remote control
- Finishes: Matte Black, PVD brushed Nickel, PVD Matte Gold, Antique Bronze, PVD Copper (contact us)
- Limited flow rate 1.3, 1.9 or 3 LPM
- RES-260-KP Purge kit
- Matching soap dispenser or hand dryer
- Integrated on washbasin support frame

