

RONDEO wall-mounted electronic mixer tap

References: **RES-24 / RES-25 / RES-34 / RES-35**

Description

Touch free wall-mounted electronic faucet with temperature control for hot and cold water.

Minimalist and durable, made to withstand intensive use.

This faucet is designed for an easy installation and upkeep.

Electronic faucets preserve water, save energy, and optimize sanitary hygiene.



Features

The unit has a self-adjusting infrared sensor which can also be adjusted by remote control (sensor range, flow time, hygiene rinse, temporary off, safety time, reset...).

Powered by 9V battery or 230/9V transformer.

Sensor includes a low battery LED indicator.

Security stop after 90 seconds without interruption.

Periodic hygiene rinse.

Chrome-plated solid brass spout \varnothing 38 mm L170 mm (optional L220 mm).

Adjustable NEOPERL aerator to optimise jet direction, with limited 6 LPM flow rate (3 LPM, 1.9 LPM or 1.3 LPM on demand).

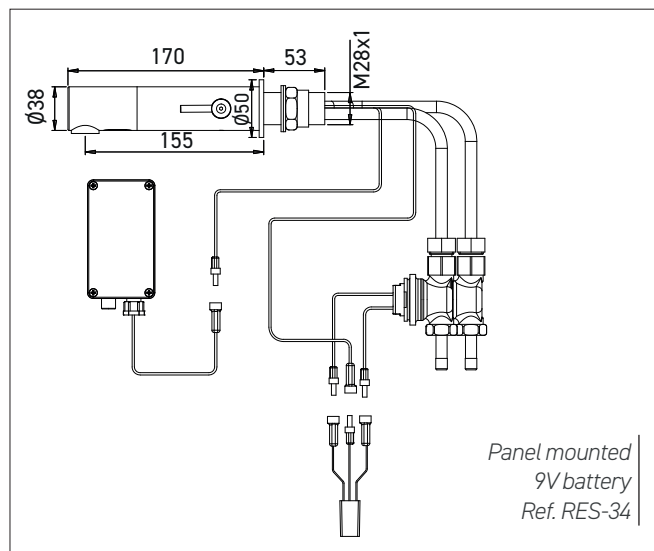
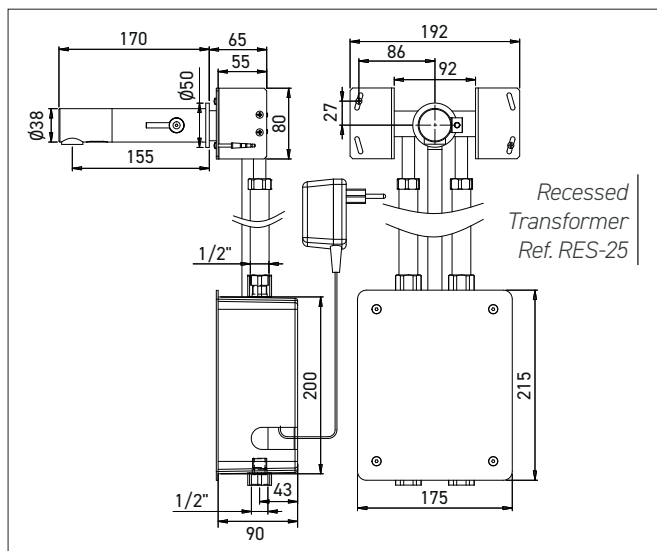
Limescale protection.

Panel mounted installation with rear access, through max. 35 mm wall, and external M $\frac{1}{2}$ " solenoid valves and filters, or recessed installation with flush-mounted box below the sink including solenoid valves, shut off valves, filters and a stainless steel front panel.

Hot and cold water supply.

Water pressure: 0.3 – 8.0 bars / Maximum temperature: 70°C.

CE. ACS. 3 year warranty.



References model choices

RONDEO electronic mixer tap

- **RES-34** panel mounted, 9V battery
- **RES-35** panel mounted, 9V transformer
- **RES-24** recessed, 9V battery
- **RES-25** recessed, 9V transformer

Options

- RES-31 Remote control
- Limited flow rate 1.3, 1.9 or 3 LPM
- Finishes: Matte black, PVD brushed nickel, PVD matte gold antique bronze, PVD copper (Contact us)
- AISI 316 stainless steel brushed finish
- Longer L version spout 220 mm
- RES-294 IP 68 transformer to supply up to 4 faucets
- RES-295 Junction box to supply up to 10 faucets
- Matching soap dispenser and hand dryer
- Integrated on washbasin iron support frame