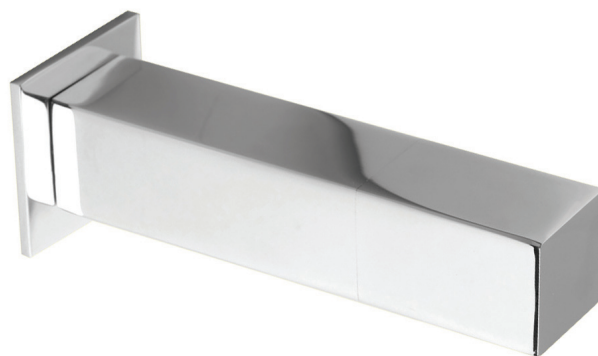


CARREO wall-mounted electronic faucet

References: **RES-40** / **RES-41** / **RES-42** / **RES-43**

Description

Wall-mounted electronic faucet with infrared sensor for cold or pre-mixed water.
 Square design and robust engineering for intensive use.
 Easy installation and upkeep.
 Electronic faucets preserve water, save energy, and optimize sanitary hygiene.



Features

The unit has a self-adjusting infrared sensor which can also be adjusted by remote control (sensor range, flow time, hygiene rinse, temporary off, safety time, reset...).

Powered by 9V battery or 230/9V transformer.

Sensor includes a low battery LED indicator.

Security stop after 90 seconds without interruption.

Periodic hygiene rinse.

Chrome-plated solid brass spout 38 x 38 mm L170 mm (optional L220 mm).

Adjustable NEOPERL aerator to optimise jet direction, with limited 6 LPM flow rate (3 LPM, 1.9 LPM or 1.3 LPM on demand).

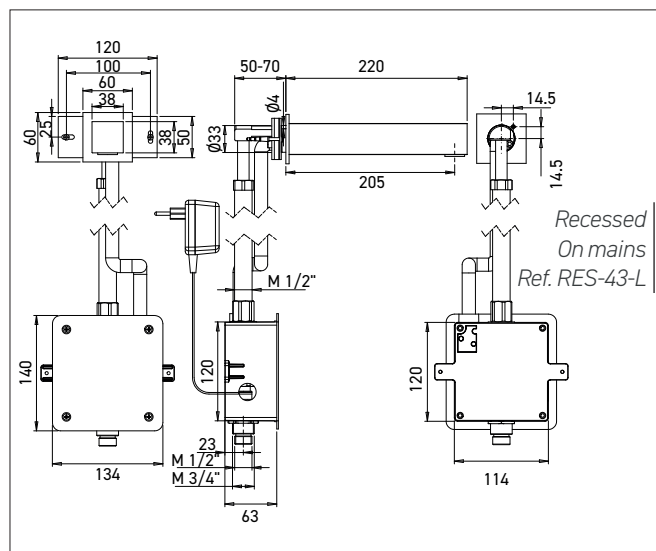
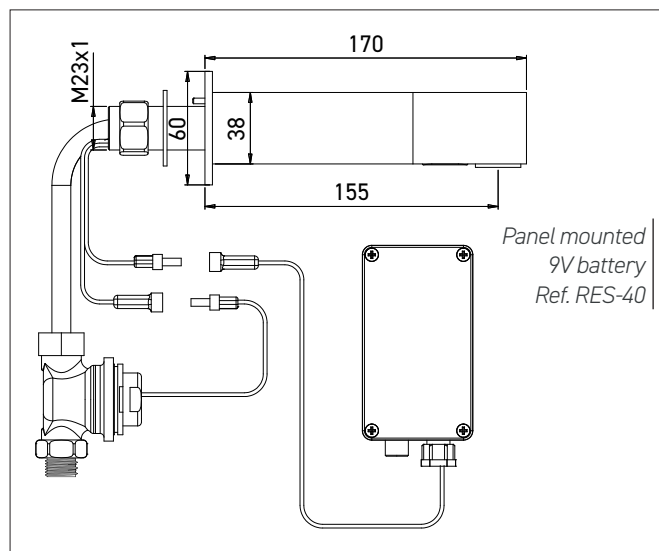
Limescale protection.

Panel-mounted through-wall installation from 1 to 35 mm (up to 200 mm as an option) with M1/2" external solenoid valve and filter, or recessed installation with box including solenoid valve, shut-off valve and stainless steel front panel, recommended under washbasin.

Cold or pre-mixed water supply.

Water pressure: 0.3 – 8.0 bars / Maximum temperature: 70°C.

CE. ACS. 3 year warranty.



References model choices

CARREO electronic faucet

- **RES-40** panel mounted, 9V battery
- **RES-41** panel mounted, 9V transformer
- **RES-42** recessed, 9V battery
- **RES-43** recessed, 9V transformer

Options

- RES-31 Remote control
- Limited flow rate 1.3, 1.9 or 3 LPM
- Finishes: Matte black, PVD brushed nickel, PVD matte gold antique bronze, PVD copper (Contact us)
- Longer L version spout 220 mm
- RES-294 IP 68 transformer to supply up to 4 faucets
- RES-295 Junction box to supply up to 10 faucets
- Matching soap dispenser