

EXTREME WM wall-mounted electronic faucet

References: **RES-90** / **RES-91**

Description

Wall-mounted electronic faucet with infrared sensor.

Its elegant design brings a sleek and modern look to your sanitary spaces.

Engineered for easy installation and upkeep.

Electronic faucets preserve water, save energy, and optimize sanitary hygiene.

Features

Infrared sensor with optimised presets, adjustable with remote control (detection range, flow duration, periodic flushing, temporary stop...).

Periodic hygiene rinse.

Automatic shutoff in the even of misuse.

Low battery indicator for replacement.

Powered by 9V battery or 220/9V transformer.

Low power consumption, battery life approx. 3 years.

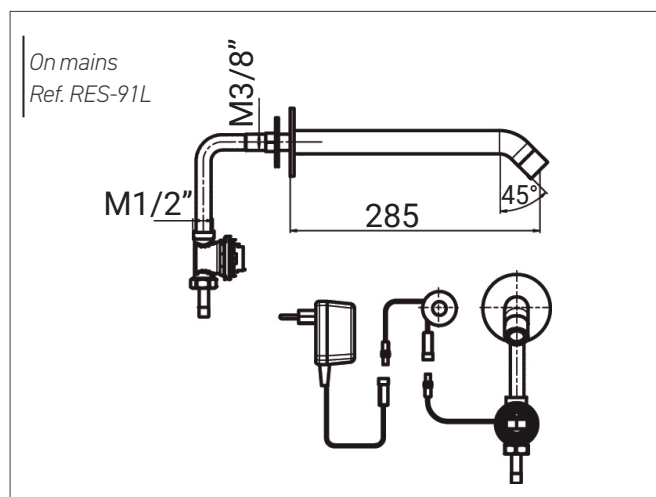
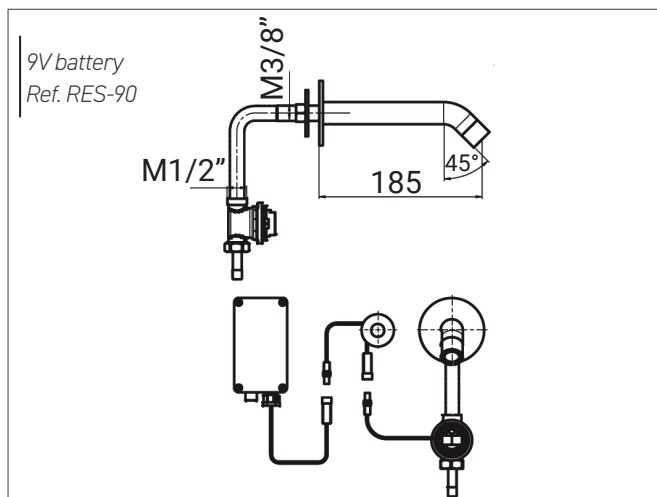
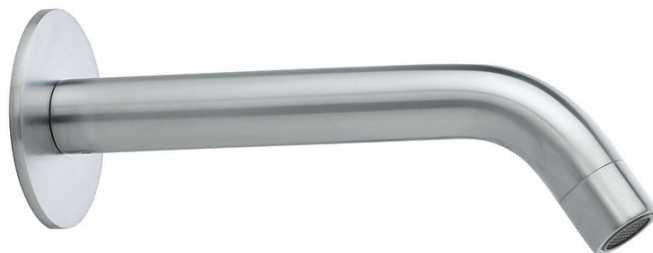
Water pressure: 0.3 – 8.0 bars / Maximum temperature: 70°C.

Cold or pre-mixed water supply, with solenoid valve.

6 LPM flow-limiting aerator.

1.3, 1.9 or 3 LPM flow rate, on demand

CE. ACS. 3 year warranty.



References model choices

EXTREME WM electronic faucet

- **RES-90** panel mounted, 9V battery
- **RES-91** panel mounted, 9V transformer

Options

- RES-31 Remote control
- Finishes: Matte black, PVD brushed nickel, PVD matte gold antique bronze, PVD copper (Contact us)
- Limited 1.3, 1.9 or 3 LPM flow rate
- Longer 265 mm L version spout
- RES-294 IP 68 transformer to supply up to 4 faucets
- RES-295 Junction box to supply up to 10 faucets
- Start/Stop option by hand approach (or stop after 8 sec., adjustable)

