

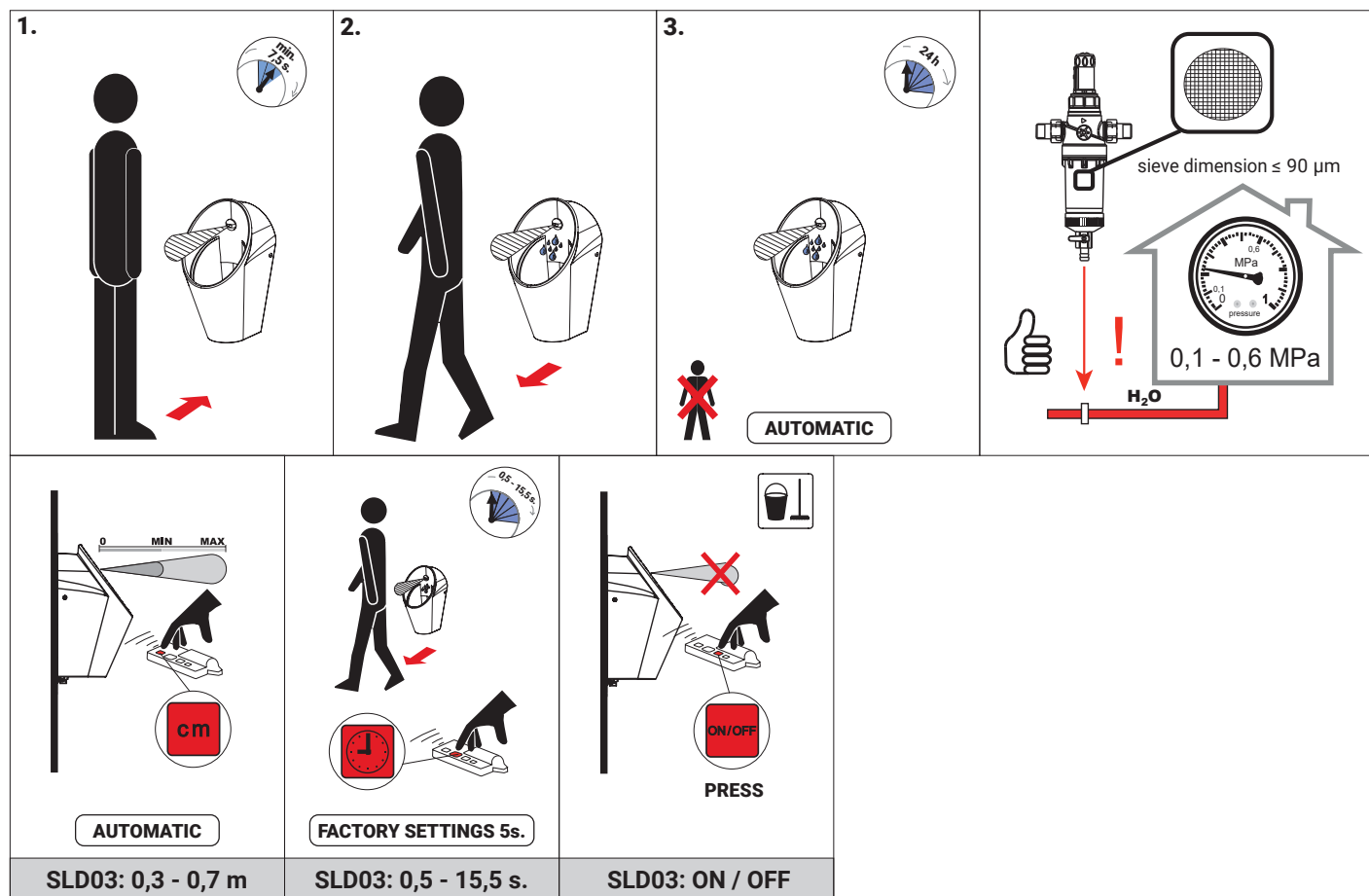
VAO ceramic urinal with infrared sensor

Reference: **S14**

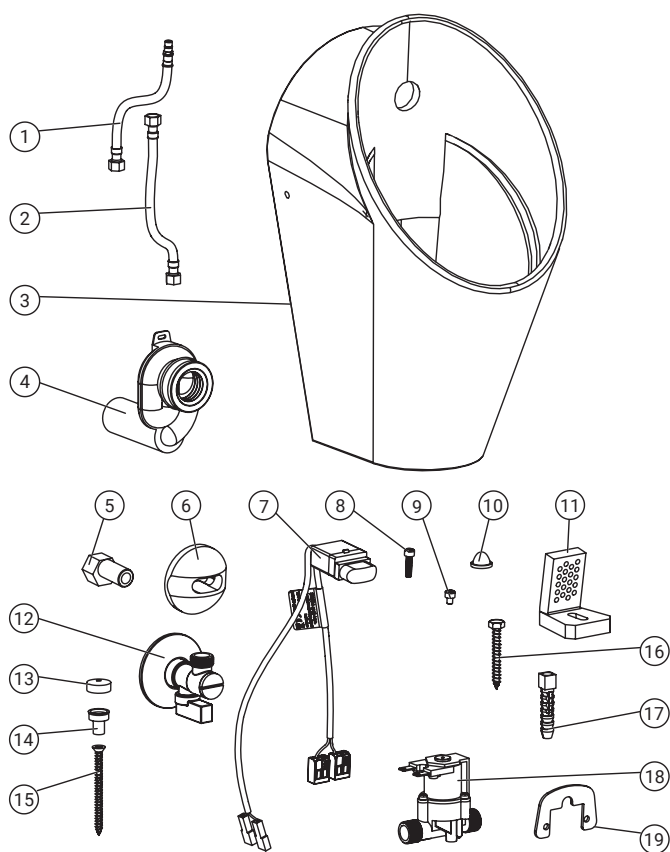
EN ISO 9001:2015



OPERATION

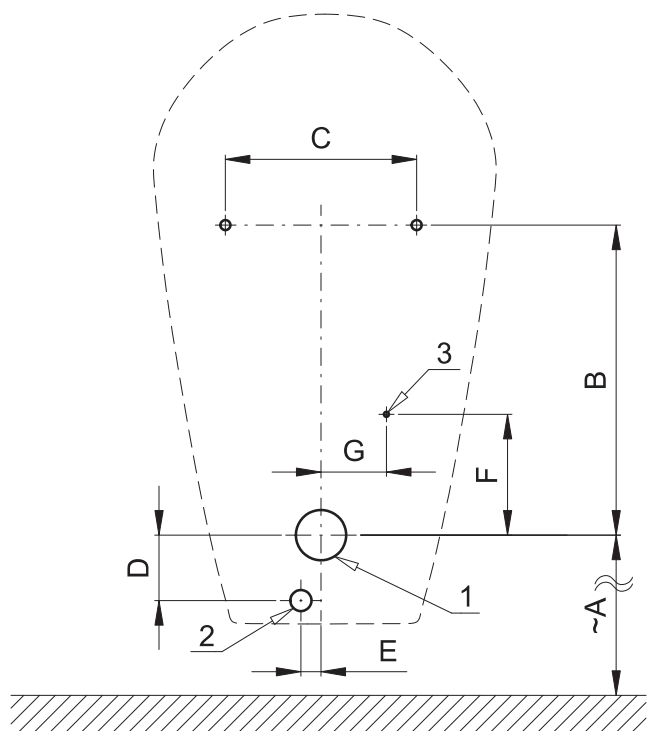


PACK CONTENT



Part n°	Ref.	Quantity
1	SAN446131	
2	SAN459951	
3	SAN477301	
4	SAN452521	
5	SAN461441	
6	SAN473381	
7	SAN440941	
8	SAN458122	
9	SAN458161	
10	SAN462681	
11	SAN477302	
12	SAN459401	
13	SAN47730	2
14		2
15		2
16		2
17		2
18	SAN459361	
19	SAN463731	

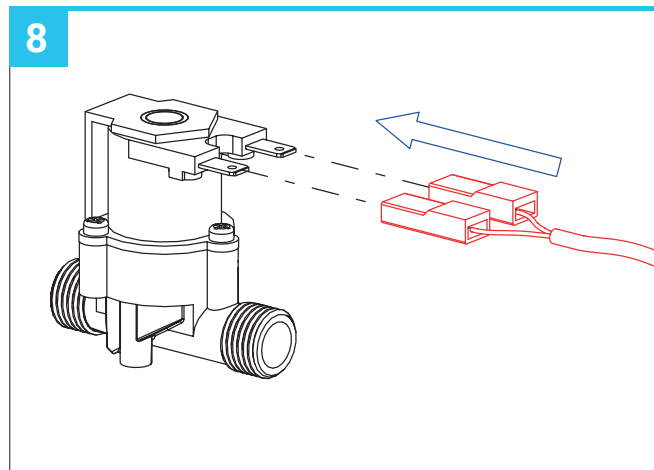
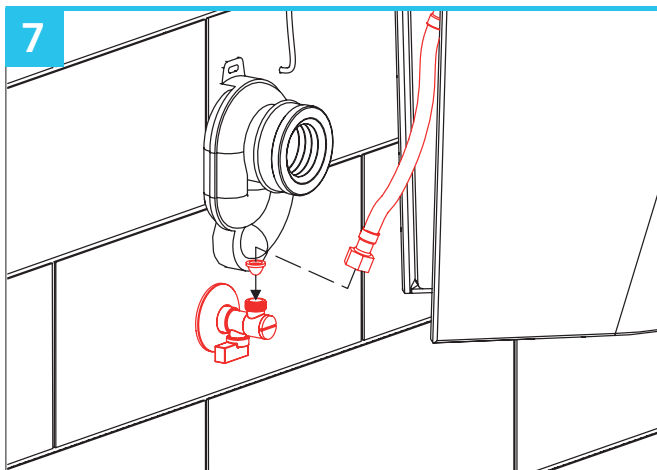
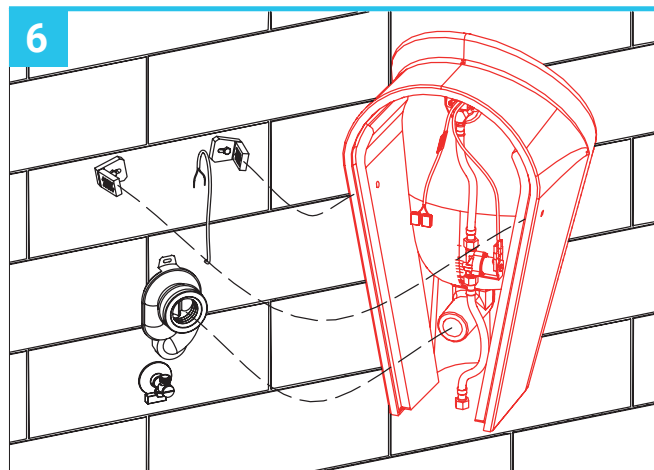
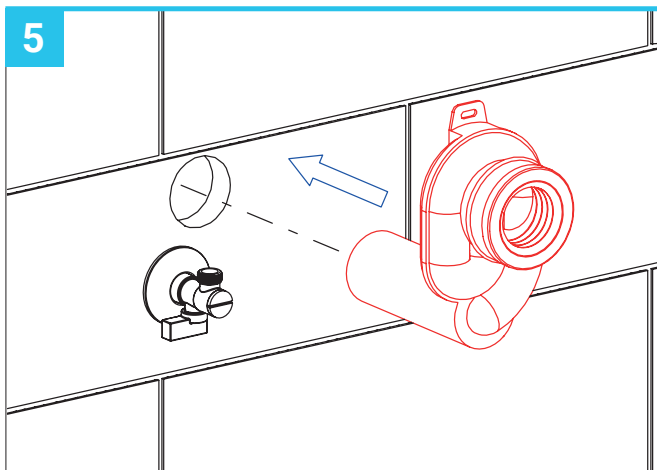
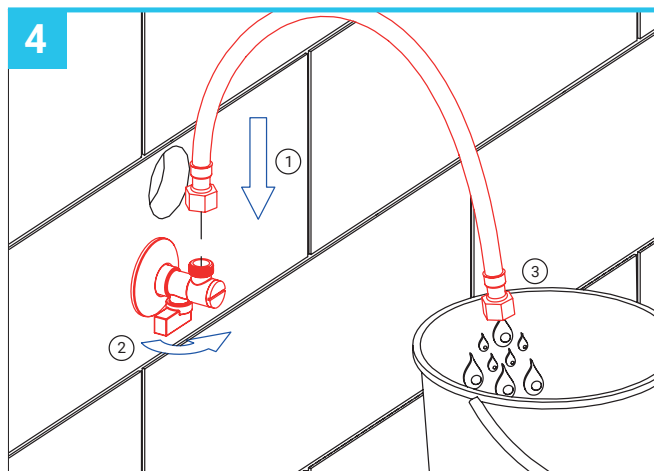
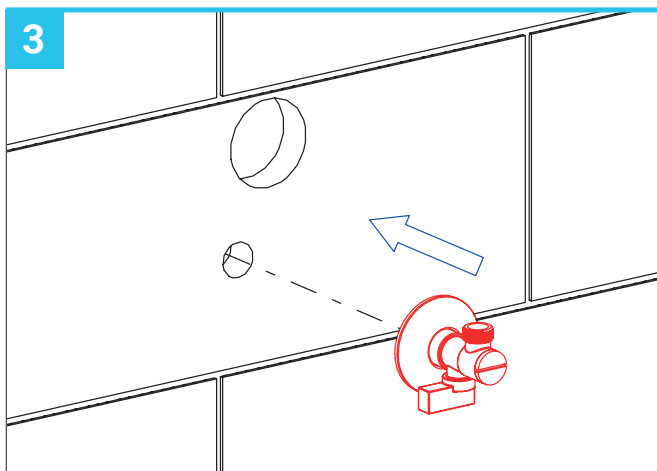
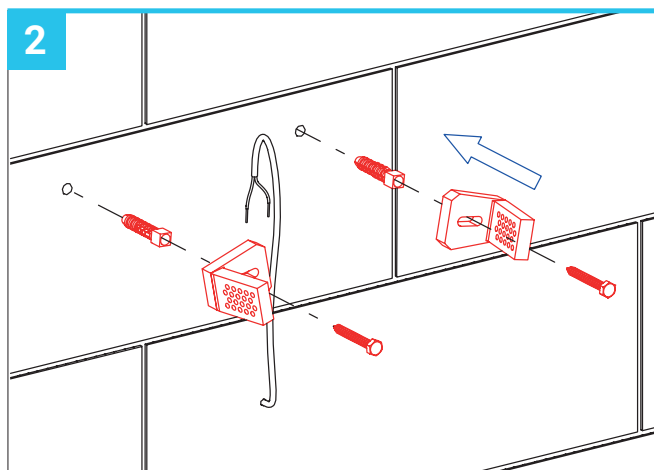
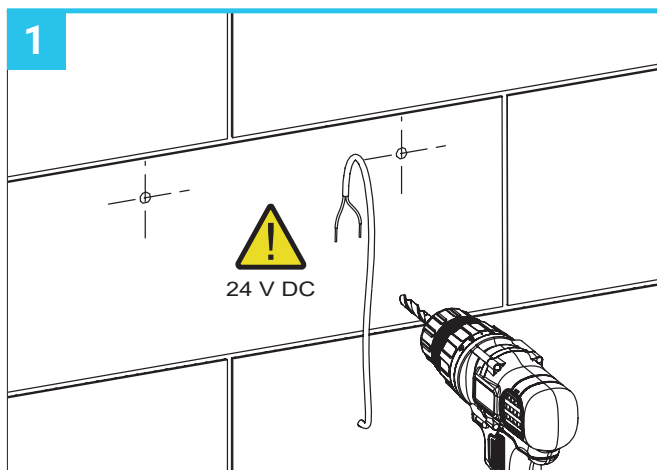
DIMENSIONS



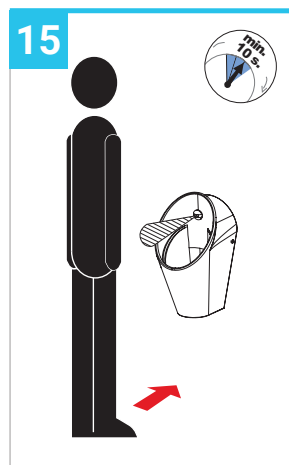
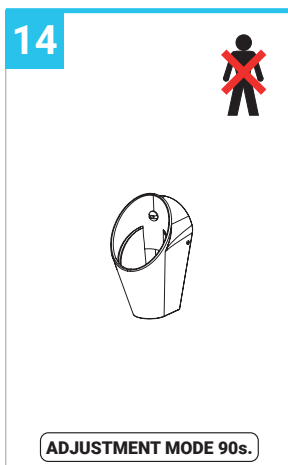
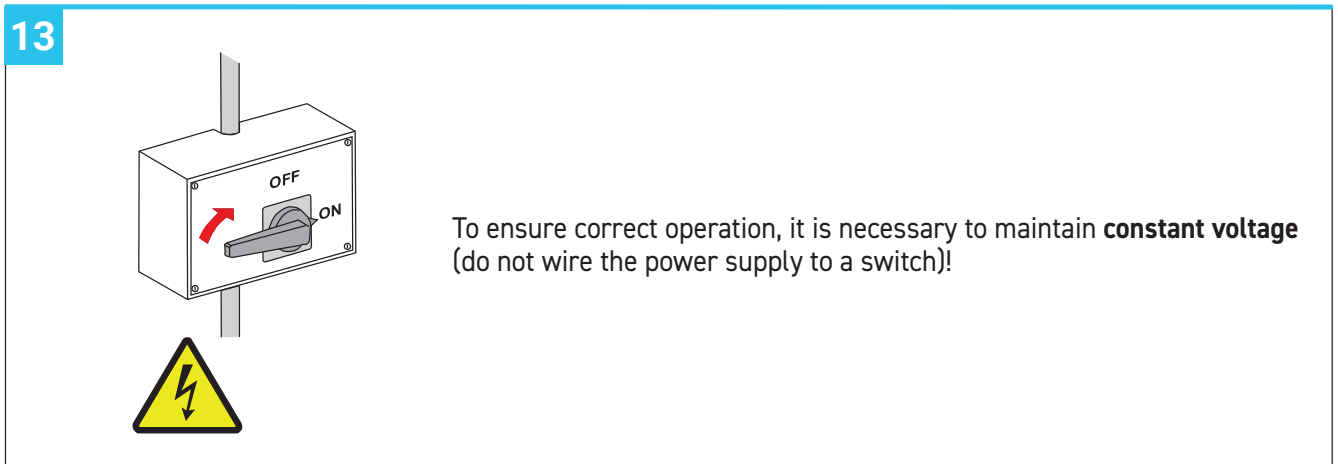
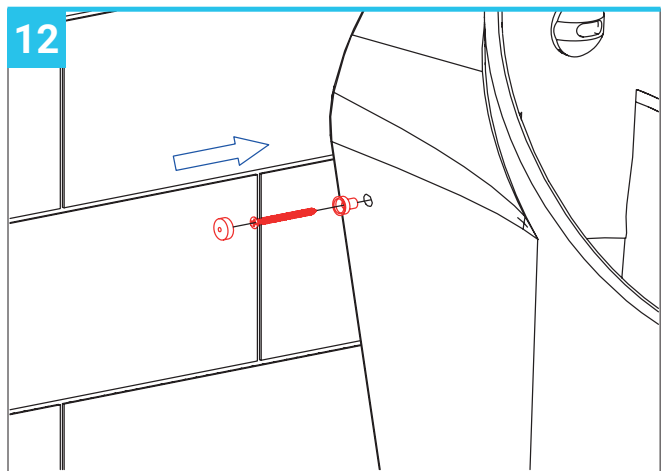
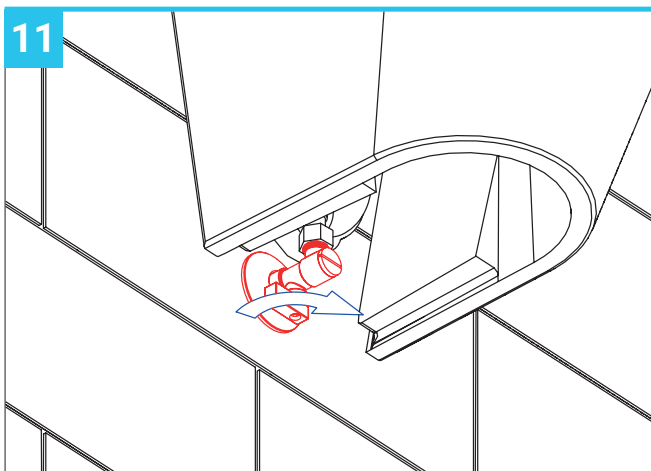
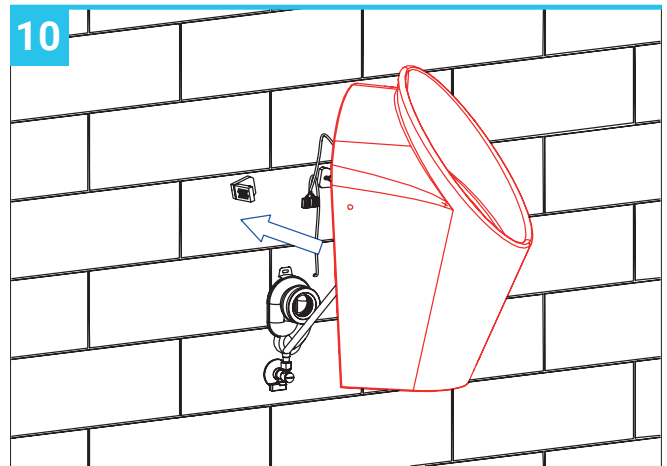
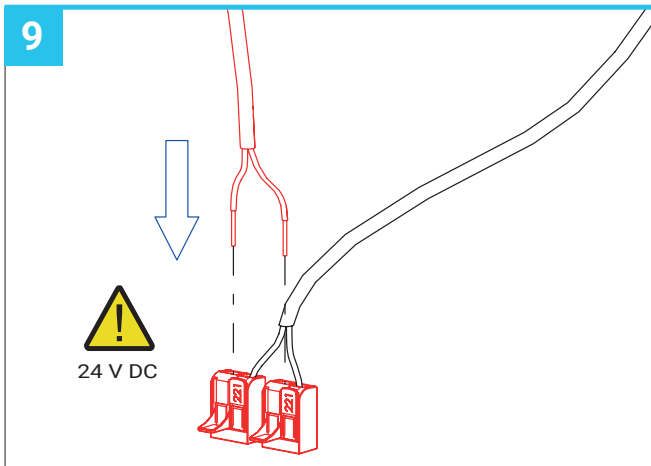
	A	B	C	D	E	F	G
mm	430	308	190	65	20	120	65

1 - ø 50 mm waste outlet pipe
2 - G1/2" water inlet
3 - 24 V power supply

INSTALLATION



INSTALLATION



MAINTENANCE

To keep the solenoid valve clean and working properly, it is recommended that the solenoid valve filter be checked for debris/dirt once a year.

It is also recommended that the screws and wiring are checked for tightness once a year.

Packaging should be disposed of in accordance with local laws and regulations.

The manufacturer declares that this product is in accordance with regulations 73/023/EEC and 89/336/EEC.

RECOMMENDED ACCESSORIES

Ref. **SLD03**: Remote control for setting adjustments

Ref. **SPZ07**: 230/24V transformer for 1 urinal

Ref. **SPZ06**: 230/24V transformer box for 1 urinal

Ref. **SPZ02**: 230/24V transformer box for max 5 urinals

Ref. **SPZ01**: 230/24V transformer box for max urinals