

VAO ceramic urinal with integrated infrared sensor

Reference: **S14**



Description

Wall-mounted rimless urinal with integrated infrared detection, designed for maximum hygiene.

Automatic flushing is triggered when the user leaves, and a raised guide channels water through the urinal to rinse the entire bowl.

Its shape is designed for easy cleaning.

Ideal for high-traffic washroom areas.

Quick **"Plug and Play"** installation with IR detection integrated into the ceramic = simply mount, connect, and the urinal is operational.

ECO modes for significant water savings:

ECO 1: Reduces the number of flushes during periods of heavy use (schools, venues, stadiums...).

ECO 2: The urinal flushes after each use, but not always with the same amount of water.

Settings adjustable based on usage frequency.



Features

Infrared detection of user presence at a maximum distance of 0.70 m and a minimum duration of 7.5 seconds.

Settings adjustable via remote control (detection range, flush duration, periodic flush, pre-flush and post-flush, on/off...).

Powered by 6V batteries or 230V/24V transformer.

Power consumption: 24V = 5W, 9V = 1.4 W.

Economical 1L flush.

Adjustable flush duration from 0.5 to 15.5 sec.

Adjustable minimum use time before activation from 6 to 15 sec.

Automatic flush after 24 hours of non-use.

Sensor range 0.3 - 0.7 m.

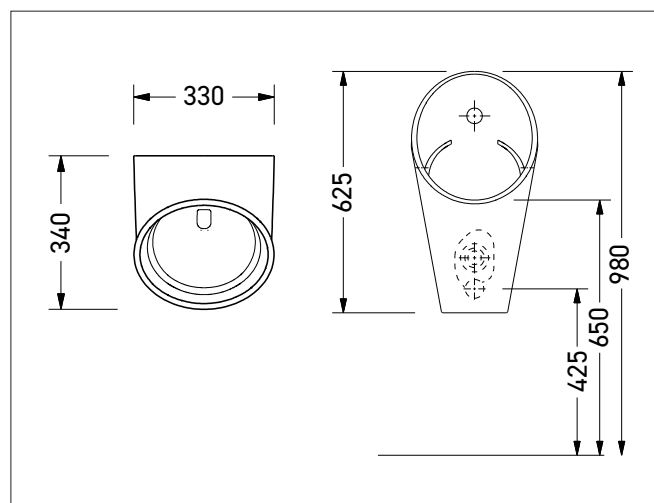
Water pressure 1 - 6 bar.

Threaded M1/2" inlet, horizontal ø 50 mm outlet.

Dimensions: W330 x H625 x D340 mm.

CE. Electronics guaranteed for 5 years.

Rimless
Concealed trap
1L rinsing
Integrated detection



References model choices

VAO rimless ceramic urinal

- **S14** **24V external transformer**
- **S14B** **4 x 1.5V AA alkaline batteries**

Options

- SLD03 Remote control
- SPZ07 Plug-in transformer for 1 urinal
- SPZ02 230/24V transformer box for max 5 urinals
- SPZ01 230/24V transformer box for max 9 urinals

