

Programmable flush for collective urinals

Reference: **SLP01Z**

Description

Programmable flush for collective urinals, consisting of a recessed stainless steel box with solenoid valve, electronic control unit, and vandal-proof stainless steel front panel.

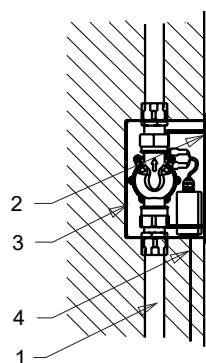
After power-up, the system performs regular flushes according to the set interval.

Flush interval programmable from 10 min to 3 days, 1 h default.

Flush duration adjustable from 0.5 to 15.5 sec, 5 sec default.

Settings adjustable via SLD04 remote control (without dismantling the stainless steel front panel).

A simple and cost-effective solution for locations with specific usage times (halftimes, nightclubs, concerts...) or for regular rinsing of waterless urinals.



- 1 - water inlet
- 2 - stainless steel front panel with electronic
- 3 - flush-mounted box
- 4 - electrical supply

Features

Electronic timer.

Stainless steel front panel: W170 x H170 x D10 mm.

Flush-mounted stainless steel box: W145 x H155 x D100 mm.

Power supply: 230V 50 Hz, integrated 24V transformer.

Pressure: 1.5–6 bar.

Flow rate: 70 LPM (adjustable via stop valve).

Ø32 mm minimum inlet, M1" threaded.

M1" threaded outlet.



To be combined with a daily or weekly timer on the electrical panel for shutdown at night, on weekends...

Reference

Programmable flush for collective urinals

- **SLP01Z** **Stainless steel front panel with electronics, recessed stainless steel housing with stop valve, integrated transformer.**

Option

- SLD04 Remote control

