

RONDEO wall mounted hand dryer

References : **SM-20** / **SM-23**

Description

High speed, high-quality touch free wall mounted hand dryer with a sleek, vandal-resistant design.

Users can dry their hands right after they wash them and all water goes in the basin, simplifying the cleaning process.

With hand dryer's hidden motor, only the spout appears on the wall, creating a new space-saving washroom experience.

HEPA filter for added hygienic properties.

Combined in a trio with the wall mounted faucet and soap dispenser, this all-in-one set improves hygiene, eases hand cleaning and drying.

Features

Self adjusting infrared sensor 170 mm \pm 20 mm or settings adjustable by remote control (sensor range, drying time, security time, temporary stop).

Operating voltage: 220-240 V 50-60Hz / 6.1-6.7 A / 1.34 - 1.6 KW.

Standby consumption 0.3-0.4W.

Security stop after 60 seconds without interruption.

Chrome-plated full brass spout \varnothing 45 mm L 220 mm.

Panel mounted installation, with rear access, through max 35 mm wall or recessed installation.

Drying time 10 -15 seconds.

Sound level min. 70 dB – max. 73.7 dB.

Air flow 75-100 m/sec. adjustable by external button.

HEPA filter.

Heater element 450-900 W, adjustable.

Heater with safety auto reset thermostat at 85° C.

Cut-off fuse at 142°C.

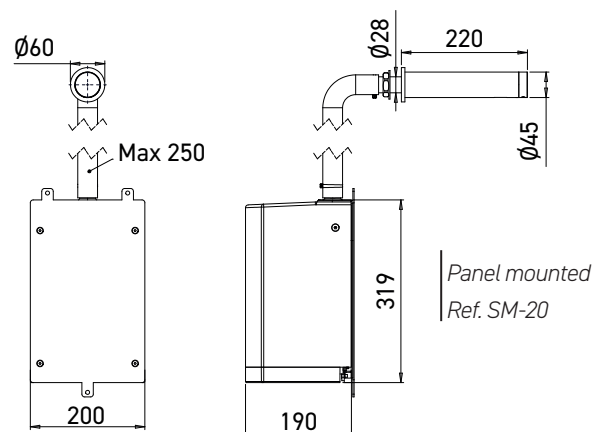
Motor with safety auto reset thermostat at 95° C.

Class 1. IP 34.

CE. 3 year warranty.



RONDEO air & water & soap



Panel mounted
Ref. SM-20

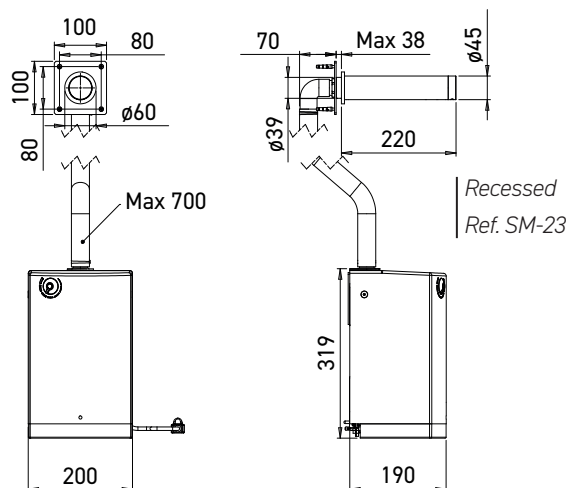
References model choices

RONDEO electronic hand dryer

- **SM-20** panel mounted
- **SM-23** recessed

Options

- Remote control ref. RES-31
- Finishes: Matt Black, PVD Antique Bronze, PVD Copper, PVD Gunmetal (contact us)
- AISI 316 stainless steel brushed finish
- Matching soap dispenser and hand dryer
- Integrated on washbasin iron support frame



Recessed
Ref. SM-23