

SUPRATECH

HYGIENE ON THE MOVE!



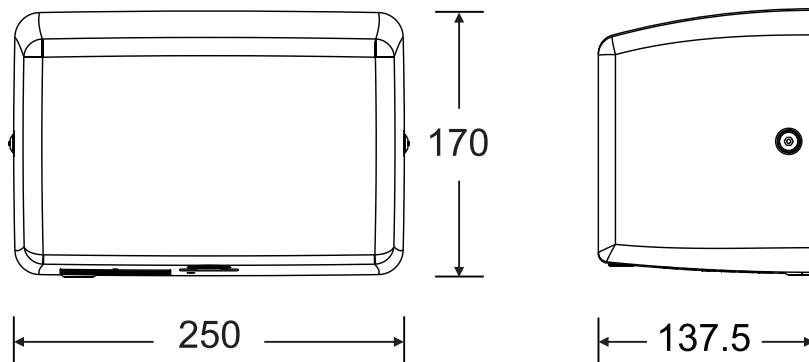
COMPACT

AUTOMATIC BRUSHLESS HAND DRYER

INSTALLATION AND MAINTENANCE GUIDE

COMPACT automatic brushless hand dryer

Refs : SM-4004 / SM-4005 / SM-4006 / SM-4007



Technical specifications

Operating Voltage	220-240 Vac, 50/60 Hz, 3.8-4.2 A, 0.9 kW
Air Output Temperature	55 °C Ambient Temp. 25 °C
Warm Air Speed Output	56.5-81.8 m/s
Dryer shall Deliver	92 m³/h
Motor Type	450 W, 20,000-28,000 R.P.M., Brushless Type
Heater Element	450 W, On:450W, Off:0W
Heater Thermal Protection	Auto Resetting Thermostat turns unit off at 85 °C, Thermal fuse cuts unit off at 142 °C
Drying Time	Less than 10-15 seconds
Stand-by Power	Less than 1.5 W
Circuit Operation	Infrared Automatic, self-adjusting
Sensor Range	Standard 120 mm ± 20 mm
Timing Protection	60 seconds auto shut off
Drip proof	IP11 or IP13 (Optional)
Isolation	Class 1
Net Weight	3.8 kg
Shipping Weight	4.2 kg
Dimensions	W250 x D137.5x H170mm

> COVER TYPE / COVER FINISH

- SM-4004 - stainless steel, satin finish (t:1.2 mm)
- SM-4005 - stainless steel, bright finish (t:1.2 mm)
- SM-4006 - steel, white finish (t:1.2 mm)
- SM-4007 - steel, black finish (t:1.2 mm)

General safety information

DANGER

- Failure to properly ground unit could result in severe electrical shock and/or death.
- All units must be supplied with a 3-wire service. The ground wire must be connected to the dryer's backplate.

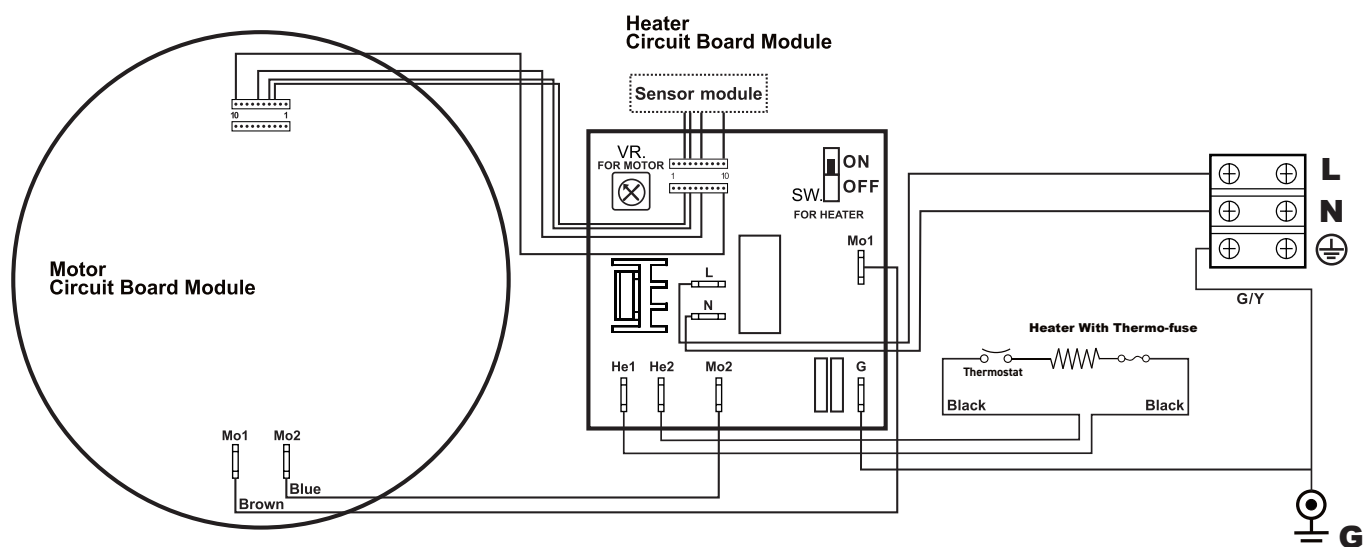
WARNING

- This product is intended for installation by a qualified service person only.
- Use 2.5 mm² electrical cables in accordance with current standards.
- Disconnect power at the service breaker before installing or servicing.

NOTES

- We do not recommend installing this dryer above a washbasin. If you are installing this dryer above a washbasin, please make sure that reflection does not occur.
- If the power supply cord is damaged, it must be replaced by the manufacturer or its service agent or a qualified person in order to avoid a hazard. Disconnect the fixed wiring only in accordance with the wiring rules.
- This appliance is not intended for use by individuals (including children) with physical, sensory or mental impairments, or lack of experience and knowledge, unless they have been supervised or instructed in the use of the appliance by a person responsible for their safety.
- Children should be supervised to ensure that they do not play with the appliance.

CIRCUIT DIAGRAM



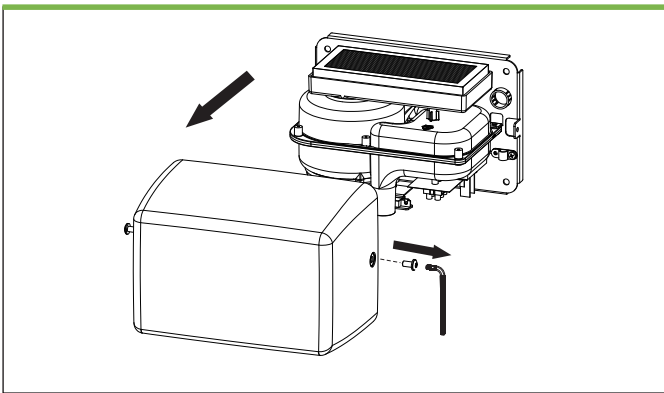
Installation

1. Make sure power supply breaker is switched off. Installation must be carried out in accordance with the current local wiring regulations code having jurisdiction. Installation should be performed by a qualified electrician only.
2. Place template against wall at desired height (see mounting height recommendations) and mark locations of 4 mounting holes and wire service entry at knockout (KO) location.

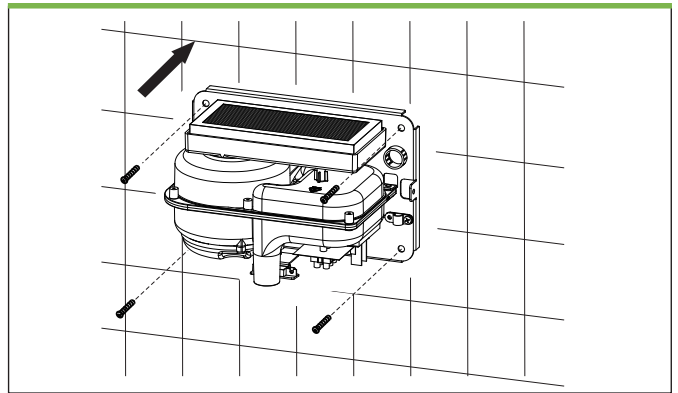
NOTE

For two or more dryers, dryers should be no closer than 24 inches (610 mm) on center.

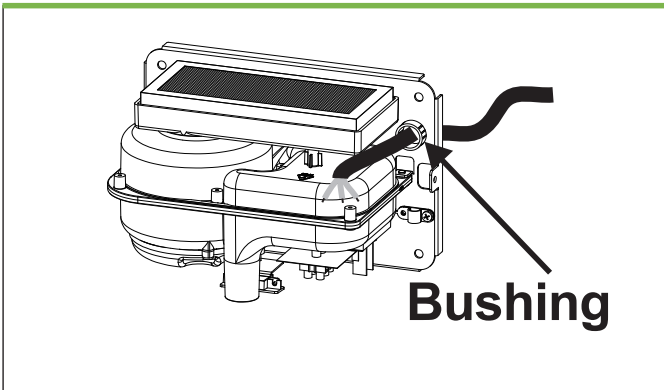
1 – REMOVE AND PUT ASIDE THE 2 SCREWS AND COVER.



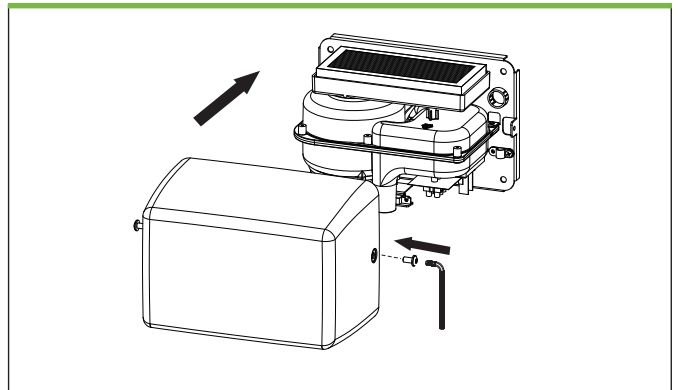
4 – FIX THE BASE PLATE TO THE WALL WITH 4 SCREWS OF 1/4" X 1-3/4" DIMENSION.



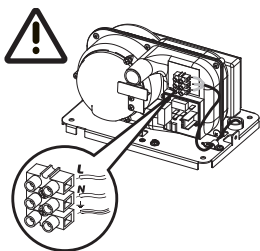
2 – INSERT THE POWER CORD INTO THE BUSHING.




5 – PUT THE FRONT COVER BACK ON AND TIGHTEN WITH ALLEN KEY.



3 – CONNECT THE WIRE INTO THE TERMINAL AS SHOWN BELOW:



- A. Connect the live wire (colored black, brown or dark) to the terminal block marked «L».
- B. Connect the neutral wire (colored white, blue or light) to the terminal block marked «N».
- C. Connect the ground wire (colored green or green and yellow) to the terminal block marked «».

Note that the colors of the live and neutral wires depend on the voltage of the power supply.

Recommended Mounting Heights From bottom edge of dryer above finished floor (AFF)

Men	1270 mm
Women	1194 mm
Children 4-7 years	889 mm
Children 8-10 years	991 mm
Children 11-13 years	1092 mm
Children 14-16 years	1194 mm
Handicap P.M.R	1016 mm

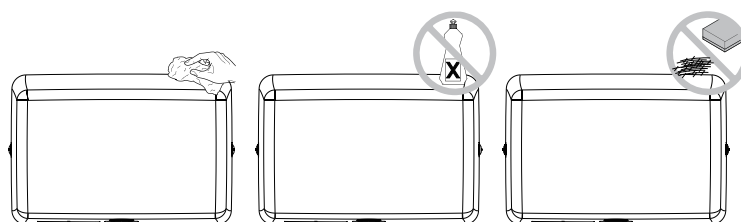
Operation

- Touch free
- Shake excess water from hands.
- Place hands under the air outlet to start operation.
- Rub hands lightly and rapidly.
- Stops automatically after hands are removed.

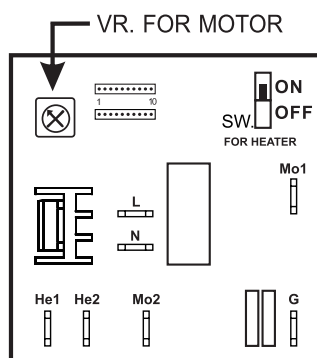
Cleaning and Maintenance

Periodic cleaning of the unit is recommended to ensure optimum performance.

- Disconnect the electrical supply.
- Remove the two cover-mounting screws.
- Remove the cover.
- Clean all dust lint from the interior of the dryer.
- Do not flush with water.
- Wipe the cover with a damp cloth and mild cleaning solution.
Do not Soak. Never use abrasives to clean the cover.
- Replace the cover. Do not over tighten the screws.



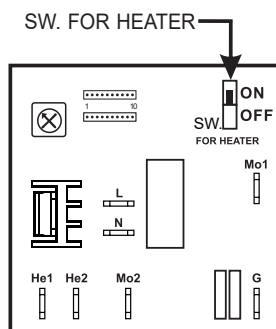
Air supply power, warm air speed and detection range settings



> Warm Air Speed Adjustment

1. Switch off the power, loosen the cover screws and remove the cover.
2. Use small Philips head screwdriver or plastic flat blade probe to turn VR shaft. Turn it gently clock-wise [CW] to increase power to maximum (+) ↻, [CCW] to reduce power as required (-) ↻.
3. DO NOT OVERTURN !

Air supply power, warm air speed and detection range settings

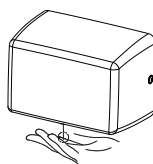


> Heater Element Switch ON / OFF

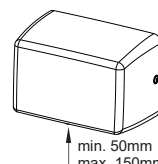
1. Switch off the power, loosen the cover screws and remove the cover.
2. Adjust the heater switch on the PCB with a small plastic or wood flat blade probe.
 - 2-1. Slide the switch to «ON» : Heater ON.
 - 2-2. Slide the switch to «OFF» : Heater OFF.

> Detection range adjustment

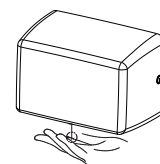
1. Switch off the power. Wait a minimum of 4 seconds and reconnect the power.
2. After connecting to power, immediately place your hand at about 5mm below the sensor and keep it there for 3 seconds (fig. 1).
3. At the end of the 3 seconds, move your hand down from the sensor to set the desired sensor range (min. 50mm / max. 150mm) and keep your hand at the desired position for 3 seconds (fig. 2).
4. At the end of those last 3 seconds, move your hand back to the original 5mm position from the sensor and keep at the position for 3 seconds to complete setting up the desired sensor range (fig. 3).



(fig. 1)



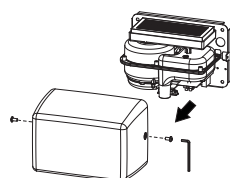
(fig. 2)



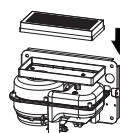
(fig. 3)

> Change Hepa Filter

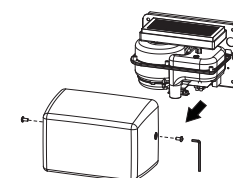
It is recommended to change the filter every six months, depending on the frequency of usage and environment.



1. Remove and retain the 2 cover screws and the cover.
Dispose of the old filter properly.



2. Replace the HEPA filter with a new one.



3. Put the cover back and screw it with L key.

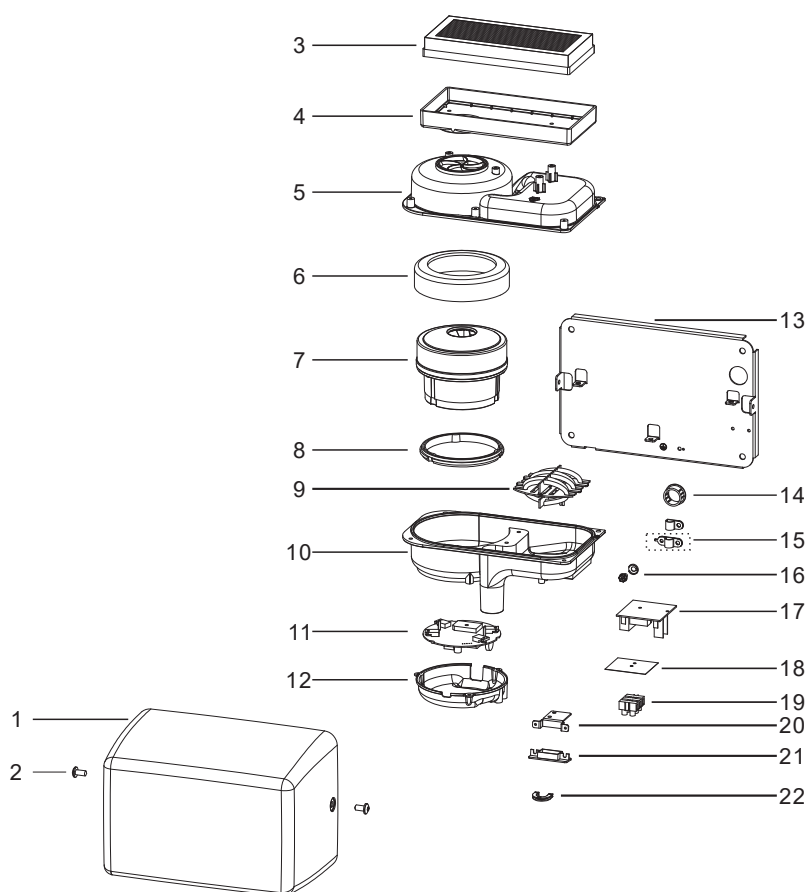
Diagnostics and troubleshooting

SYMPTOM	TROUBLESHOOT FOR INITIAL INSTALLATION FAILURES
If the dryer will not run	First ensure that the breaker supplying the dryer is operational. If it is, disconnect the power and remove the dryer cover. Taking suitable precautions to avoid shock hazard, reconnect the power and check for voltage at the terminal block. Verify that connections are made correctly.
The dryer cycles by itself or runs constantly	Ensure that there is no obstruction on or in front of the IR sensor. Clean any dirt or debris off the sensor lens. If problem persists, replace sensor.
The dryer makes a loud noise and does not run for a complete cycle	Ensure that the supply voltage is correct. Dryer will make a loud humming noise if the input voltage is too high. Verify voltage requirement on unit rating label and correct supply as required. If CBM has been damaged, replace CBM, IR sensor module and VR component and cable.
The dryer runs but air stream is low pressure and/or low velocity	Ensure that the supply voltage is correct. Dryer will run weakly if the input voltage is too low. Verify voltage requirement on unit rating label and correct supply as required.

Diagnostics and troubleshooting

SYMPTOM	TROUBLESHOOT FOR INITIAL INSTALLATION FAILURES
If the dryer will not run but sensor is activates and flashing red, the color signal on the PCB is purple.	In this case, the suggested fix is to change the PCB
If the dryer will not run as a result of an over-current or surge from the power supply, the color signal on the PCB is yellow.	In this case the suggested fix is to change the PCB
If the dryer will not run when temperature inside the motor is too high (>100°C), the color signal is pink.	In this case, the suggested fix is to change the motor
The dryer runs but the air stream is low pressure and/or low velocity when the motor is functioning abnormally, the color signal on the PCB is blue.	In this case, the suggested fix is to change the motor
No hot air available	Check the heating element is on or off. If it is off, turn it on. If there is still no hot air, replace the heating element or the PCB.

Spare Parts List



N°	DESCRIPTION
01	Cover
02	Security hex screw (2 reqd.)
03	HEPA Filter
04	HEPA Filter holder
05	Blower housing (Upper)
06	Motor rubber (Large)
07	Brushless motor
08	Motor rubber (Small)
09	Heater assembly
10	Blower housing (Below)
11	Circuit Board Module
12	Circuit Board Module the cover
13	Base plate
14	Nylon hole bushing
15	Cable clamp
16	Grounding Screw
17	Circuit Board Module for heater
18	Insulation mylar
19	Terminal block
20	Sensor bracket
21	Sensor
22	Cable protector
23	L-Wrench

IMPORTANT

This product falls within the scope of the Waste Electrical & Electronic Equipment Directive 2012/19/EU. (WEEE)

NOTE

This product should not be disposed of with household waste. Please recycle where facilities exist. Check with your local authority for recycling advice.



SUPRATECH

AUTOMATED SYSTEMS - SANITARY ACCESSORIES - STAINLESS STEEL SANITARY WARE

2, rue des Cyprès - 37240 Bossée - France
Tél : (33)2 47 92 23 31 - Fax : (33)2 47 92 84 71
info@autosanit.com
www.autosanit.com



10.2023