

SUPRATECH

HYGIENE ON THE MOVE!



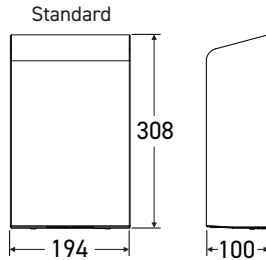
CLEAN-AIR

AUTOMATIC HAND DRYER

INSTALLATION AND MAINTENANCE GUIDE

CLEAN-AIR automatic hand dryer

Ref. **SM-5001 / SM-5002 / SM-5003**



TECHNICAL SPECIFICATIONS

Operating Voltage	220-240 Vac, 50 or 60 Hz frequency, 3.8 - 4 A, 0.84 - 0.92 kW
Air output temperature	55°C - Ambient temperature 25°C (max., adjustable)
Air speed output	63 - 89 m/s (141 - 200 mi/h)
Air flow rate	86 m ³ /h
Motor	325 - 460 W, 22 000 - 29 000 RPM, adjustable brush type, dual ball bearing
Motor thermal protection	Auto resetting thermostat turns unit off at 95°C
Heater element	325 - 460 W adjustable
Heater thermal protection	Auto resetting thermostat turns unit off at 85°C, thermal fuse cuts unit off at 142°C
Drying time	Less than 10 - 15 seconds
Stand-by power	0.3 - 0.4 W
Circuit operation	Infrared automatic, self-adjusting
Sensor range	Adjustable from 100 to 230 mm, standard 170 ± 20 mm
Timing protection	60 seconds auto shut off
Drip proof	IP24
Isolation	Class 1
Weight	4 kg (5.2 kg shipping weight)
Dimensions	W194 x D100 x H308 mm

> FINISHES

- SM-5001 - Brushed stainless steel (th. 1.2 mm)
- SM-5002 - Black stainless steel (th. 1.2 mm)
- SM-5003 - White stainless steel (th. 1.2 mm)

GENERAL SAFETY INFORMATION

DANGER

- Failure to properly ground unit could result in severe electric shock.
- Electrical connection via 3-wires, with the ground wire connected to the dryer's plate.

WARNING

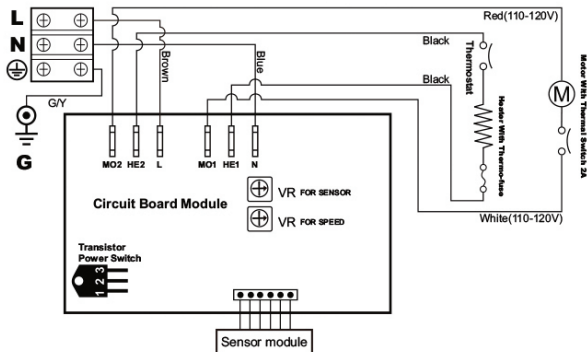
- Installation by qualified service personnel only.
- Use 2.5 mm² electrical cables in accordance with current standards.
- Shut off the power supply before installation or maintenance.

NOTES

- Installation of this dryer above a washbasin isn't recommended.
If installed above a washbasin, ensure there is no reflection.
- If the power supply cord is damaged, it must be replaced by the manufacturer or its distributor or a qualified agent in order to avoid any hazard. Disconnect the fixed wired only in accordance with the wiring rules.
- This device may be used by children aged 8 year or above and by persons with reduce physical, sensory or mental capabilities, or lack of experience and knowledge, provided they have been given supervision or instruction concerning the safe use of the device and understand the hazards involved.
- Children shall not play with the device.
- Cleaning and user maintenance shall not be carried out by children without supervision.

CIRCUIT DIAGRAM

220~240V

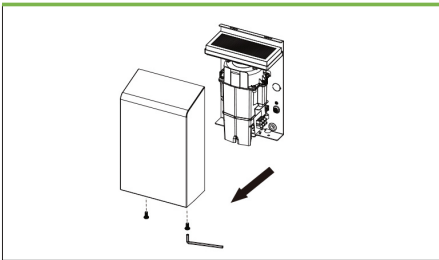


INSTALLATION

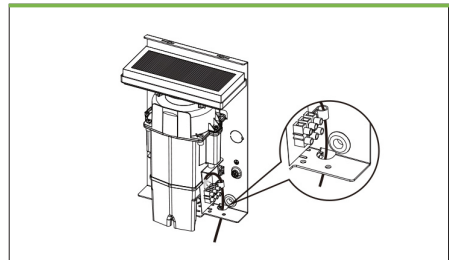
1. Ensure the power supply breaker is switched off.
Installation shall be carried out in accordance with current local electrical regulations and by a qualified electrician only.
2. Place the template against the wall at the desired height (see installation height recommendations) and mark the locations of the four fixing holes and electrical wire entry point.

NOTE: The spacing between 2 hand dryers should be at least 610 mm.

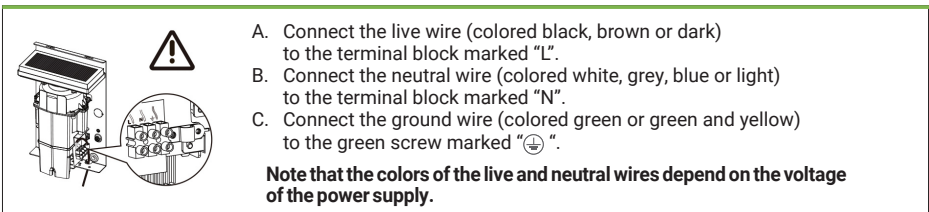
1 - REMOVE AND PUT ASIDE THE 2 SCREWS AND THE COVER



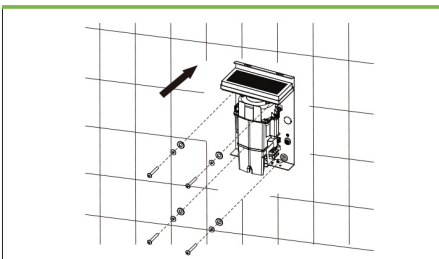
2 - INSERT THE POWER SUPPLY CORD INTO THE BUSHING



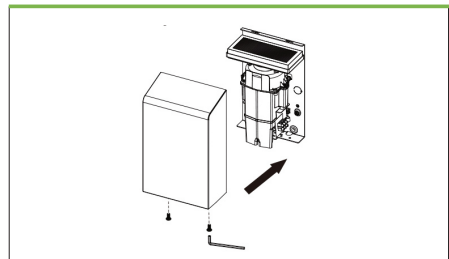
3 - CONNECT THE WIRES INTO THE TERMINAL



4 - FIX THE BASE PLATE TO THE WALL WITH 4 SCREWS OF Ø6 X 38 MM DIMENSION



5 - PUT THE FRONT COVER BACK ON AND TIGHTEN WITH L KEY



RECOMMENDED HEIGHTS

Men	1270 mm
Women	1194 mm
Children 4-7 years	889 mm
Children 8-10 years	991 mm
Children 11-13 years	1092 mm
Children 14-16 years	1194 mm
P.R.M	1016 mm

(from bottom edge of dryer above finished floor)

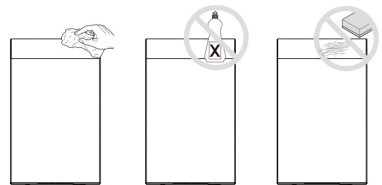
OPERATION

- Touch-free.
- Shake excess water from hands.
- Place hands under the air outlet to start operation.
- Rub hands lightly and rapidly.
- Stops automatically after hands are removed.

CLEANING AND MAINTENANCE

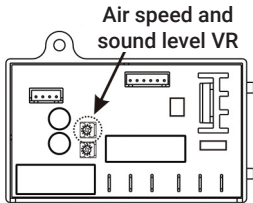
Regular cleaning is recommended to ensure optimum performance

- Disconnect the electrical supply.
- Remove the 2 cover-screws and the cover
- Clean all the dust inside the hand dryer
- Wipe the cover with a damp cloth and mild cleaning solution. Do not soak.
- Never use abrasive to clean the cover.
- Put the cover back on. Do not over tighten the screws.



SETTINGS ADJUSTMENTS

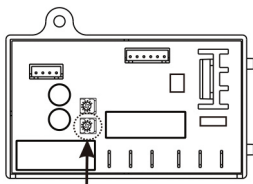
Disconnect the power supply, remove the cover by unscrewing the 2 screws.



> Hot air speed and sound level adjustment

Use a small Phillips screwdriver (do not force) :

- Turn it clockwise to increase (+) ↻
- Turn it counterclockwise to decrease (-) ↻



> Sensor range adjustment

Standard range 170 ±20 mm.
Adjustable from 100 to 230 mm.

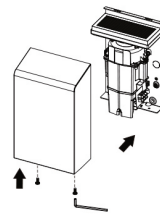
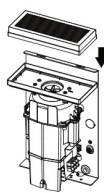
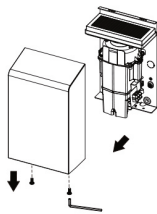
Use a small Phillips screwdriver:

- Turn it clockwise to increase (+) ↻
- Turn it counterclockwise to decrease (-) ↻

Turn gently. Do not force further.

> Hepa filter replacement

It is recommended to change the filter every six months, based on the frequency of use and the environment.



1. Remove and put aside the 2 screws and the cover. Filter must be disposed of in an appropriate manner.

2. Replace the HEPA filter with a new one.

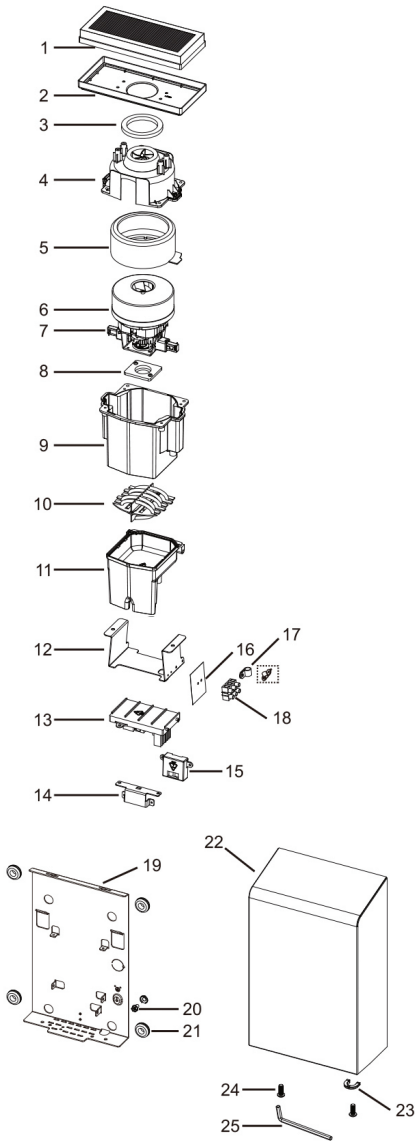
3. Put the front cover back and tighten with L key.

TROUBLESHOOTING

PROBLEM	TRUBLESHOOTING FOR INITIAL INSTALLATION FAILURE
The hand dryer does not run	Ensure that the breaker supplying the dryer is engaged. If it is, isolate the power and remove the hand dryer cover. Taking appropriate precautions to avoid shock hazard, reconnect the power and check for voltage at the block terminal. Check that the connections are made correctly.
It cycles by itself or runs continuously	Ensure that there are no obstructions in front of or on the sensor. Clean the infrared sensor. If problem persists, replace sensor.
Muffled sound or does not run for complete cycle	Ensure that the power supply is correct following the hand dryer label. The hand dryer will make a loud humming noise if the input voltage is too high. Replace damages elements (PCB and sensor).
It runs but weak airflow	Ensure that the power supply is correct. The dryer will run weakly if the input voltage is too low. Correct the power supply as required.

PROBLEM	TRUBLESHOOTING FOR IN SERVICE FAILURE
The hand dryer does not run	Ensure that the breaker supplying the dryer is operational. If it is, isolate the power and remove the hand dryer cover. Replace PCB and sensor. Taking appropriate precautions to avoid shock hazard, reconnect the power and check for voltage at the block terminal.
	Isolate the power supply, then check the heater element with a multimeter. If Ω is infinite, replace the element. If Ω is between 27 and 32, check motor brushes for rear and replace them if necessary (≤ 10 mm of graphite). If it still does not work after replacement and inspection, replace the hand dryer motor.
Very short detection range	Ensure that there are no obstructions in front of or on the sensor. Clean the infrared sensor. If problem persists, isolate the power and remove the hand dryer cover. Taking appropriate precautions, reconnect the dryer and gently adjust the sensitivity (yellow axis blue square on the PCB) in order to increase the sensor range. If problem persists, change PCB and sensor.
The heater heats up but no airflow	Unplug the power cord. Remove the cover and open the blower housing. Replace the hand dryer motor.
Blows cold air	Unplug the power cord. Remove the cover and open the blower housing. Test the open circuit thermostat. Check the heater element for signs of burning and/or damage. Replace damaged elements.
Weak airflow	Check that the air outlet is unobstructed. If there are not, unplug the cord. Remove the cover. Remove dust, dirt built-up on ventilation slits. Check the speed VR. Open the blower housing. Check motor brushes for wear (≤ 10 mm of graphite) and replace if necessary.

SPARE PARTS LIST



N°	DESCRIPTION
01	HEPA filter
02	HEPA filter bracket
03	O-ring for HEPA filter bracket
04	Blower housing (top)
05	Rubber motor seal (large)
06	Motor
07	Motor brushes
08	Rubber motor seal (small)
09	Blower housing (bottom)
10	Heater element
11	Air outlet
12	Air outlet bracket
13	Electronic board (PCB)
14	Sensor bracket
15	Sensor
16	Mylar insulator, LNG marked
17	Cable clamp
18	Terminal
19	Plate
20	Earthing screw
21	Rubber spacer (x4)
22	Cover
23	Cable protection
24	Security screw
25	L key

LIMITED WARRANTY

This hand dryer is covered by a 3-year warranty from the date of purchase.

If a defect is reported during the normal usage period, you are entitled, at SUPRATECH's discretion, to either replacement or repair of the defective parts due to material or manufacturing defects.

SUPRATECH will not be responsible for any labour, installation or other additional or indirect costs other than those specified above.

In no event shall SUPRATECH's liability exceed the purchase price of the product.

This warranty does not cover breakdowns due to incorrect installation or maintenance, normal wear and tear.

This disclaimer of warranty includes, among others:

- Incorrect installation.
- Improper use, modifications, defects or lack of maintenance.
- Wear parts.
- Vandalism.

Failure to comply with the safety precautions and/or installation recommendations described in this installation guide will void the warranty.

For all warranty claim, please contact your plumbing contractor, dealer or SUPRATECH directly.

Please be sure to provide all pertinent information regarding your claim:

complete description of the problem, reference and model number, proof of purchase and installation date.

SUPRATECH

AUTOMATED SYSTEMS - SANITARY ACCESSORIES - STAINLESS STEEL SANITARY WARE

2, rue des Cyprès - 37240 Bossée - France
Tel. +33 (0)2 47 92 23 31 - info@autosanit.com
www.autosanit.com

