

High-speed stainless steel hand dryer for panel-mounted installation

Reference: **SM-R20**

Description

High-speed hand dryer with stainless steel spout, designed for minimal wall projection and concealed motor.

Allows hand drying immediately after washing, with water falling directly into the basin to simplify maintenance.

Ergonomic air outlet for faster drying and reduced noise.

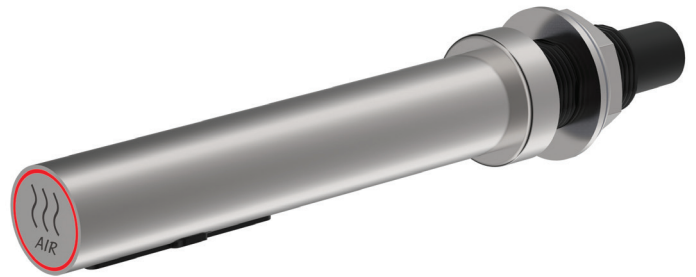
Designed to blend into any washroom environment.

Intelligent temperature control technology adjusts the heating element based on room temperature for user comfort and reduced energy consumption.

AIR pictogram with LED indicators.

Adjustable power and sound level.

ENERGY-SAVING OPERATION: CONSUMES BETWEEN 500 AND 1000 W OVER A SHORT DRYING CYCLE.



Stainless steel housing

Features

AISI 304 stainless steel spout with brushed finish.

Self-adjusting infrared sensor.

Detection range: 130 mm \pm 20 mm, adjustable.

Power supply: 220/240 V, 50/60 Hz. 0.84 - 1 kW

Standby consumption: 0.3 - 0.4 W.

Safety shut-off after 60 seconds of interrupted use or in case of overheating.

Safety features:

- Heating element protected by 142°C thermal fuse
- Motor protected by 85°C thermal cut-off
- Motor protected by 95°C thermal cut-off

Power: 1000 W (500 W motor, 500 W heating element)

Air speed: 93 - 110 m/s

Drying time: 10 to 15 seconds

Sound level: 70 to 72 dB at 1 m

Activated carbon filter

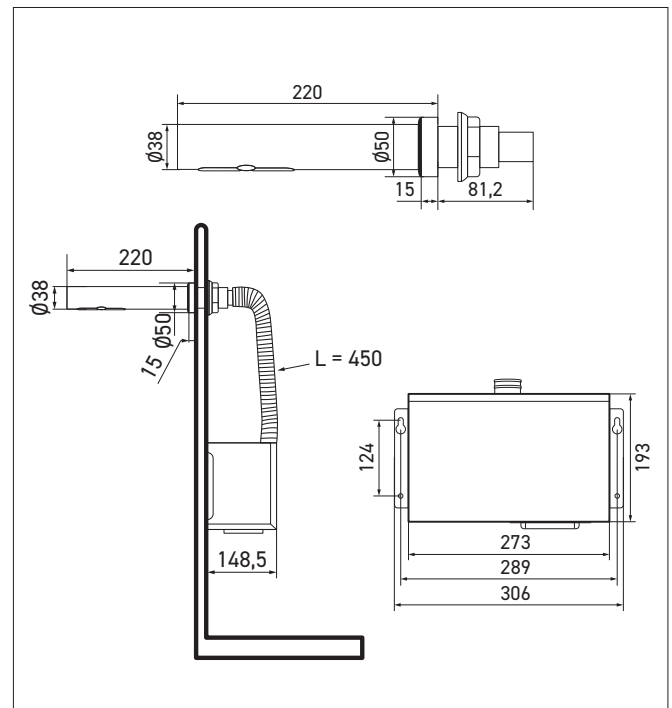
Spout dimensions: W220 x \varnothing 38 mm

Stainless steel housing dimensions: W306 x D148.5 x H193 mm

Electrical insulation: Class I

Protection rating: IP35

CE. 3 year warranty.



Reference

Wall-mounted high-speed stainless steel hand dryer

- **SM-R20** stainless steel, brushed finish

Option

- HEPA filter