

Free-standing stainless steel urinal with invisible automatic flushing

References: **URPX-600P-TH / URPX-1200P-TH / URPX-1800P-TH**

Description

Modular free-standing stainless steel urinal stalls for floor mounting, designed for series, L, or U configurations, with invisible thermal electronic activation = aesthetic, simplified installation, and vandal-proof.

Non-trap system for maximum reliability; no risk of damage from liquids.

Hygiene = touch-free and eliminates unpleasant odors.

Designed for heavy-duty use and resistance to vandalism.

Complete flushing through a perforated stainless steel spray bar, creating a waterfall effect: accessible plumbing connection and removable spray bar for maintenance.

Features

Collective stall in AISI 304 stainless steel, brushed finish, with 1.2 mm thick stainless steel.

Integrated thermal sensor with solenoid valve, angle shut-off valve with filter. Adjustable flushing duration from 0.5 to 15.5 seconds.

External power supply transformer 230/24 V (6V batteries optional). Power consumption: 7 W (mains) / 3 W (batteries).

Adjustable parameters via SLD04 remote control (flushing duration, sensitivity, on/off...).

Automatic flushing after 24 hours of non-use.

Pressure: 1-8 bars. Flow rate: 12 l/min at 3 bars.

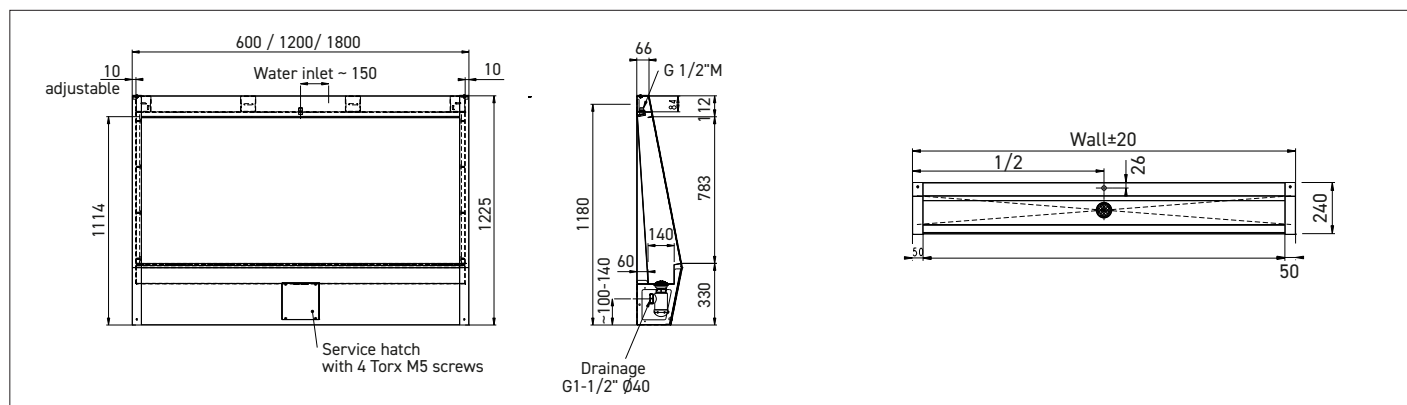
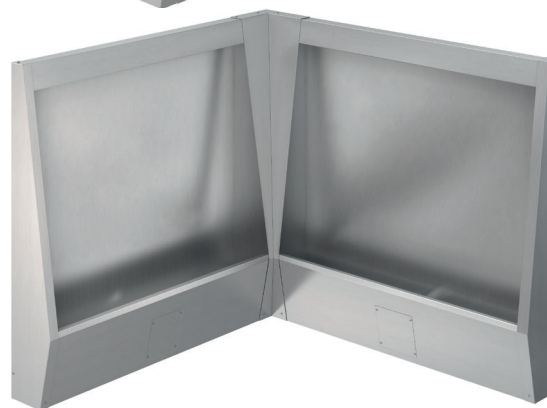
Central water supply inlet 1/2" with accessible plumbing connection.

Drainage through central waste fitting 1 1/2" Ø40 mm. Trap included.

Floor-mounted, trap accessible through service hatch.

Dimensions: W600 to 1800 x D240 x H1225 mm.

CE. Electronics guaranteed for 5 years.



References model choices

Automatic stainless steel free-standing urinal

- **URPX-600P-TH** 600 mm
- **URPX-1200P-TH** 1200 mm
- **URPX-1800P-TH** 1800 mm

Options

- URPX-JP Inter-stall cover
- URPX-ANGP 90° or custom angle cover
- URPX-LAT-GP/URPX-LAT-DP Side cover when visible side not against wall (GP= left side, DP= right side)
- URPX-SEPP Stainless steel separator
- ...-TB Battery-powered version