

Stainless steel floor-standing urinal through

Reference: **URPX-P**

Description

Stainless steel floor-standing urinal through, modular for installation in series, L-shape, or U-shape.

Complete rinsing by perforated stainless steel ramp with water wall effect: accessible plumbing connection and removable rinsing ramp for maintenance.

Specifically designed for easy installation and maintenance, with great modularity according to the desired configuration.



Features

Communal stall in AISI 304 stainless steel, brushed finish, 1.2 mm thick.

Central 1/2" water inlet with accessible plumbing connection.

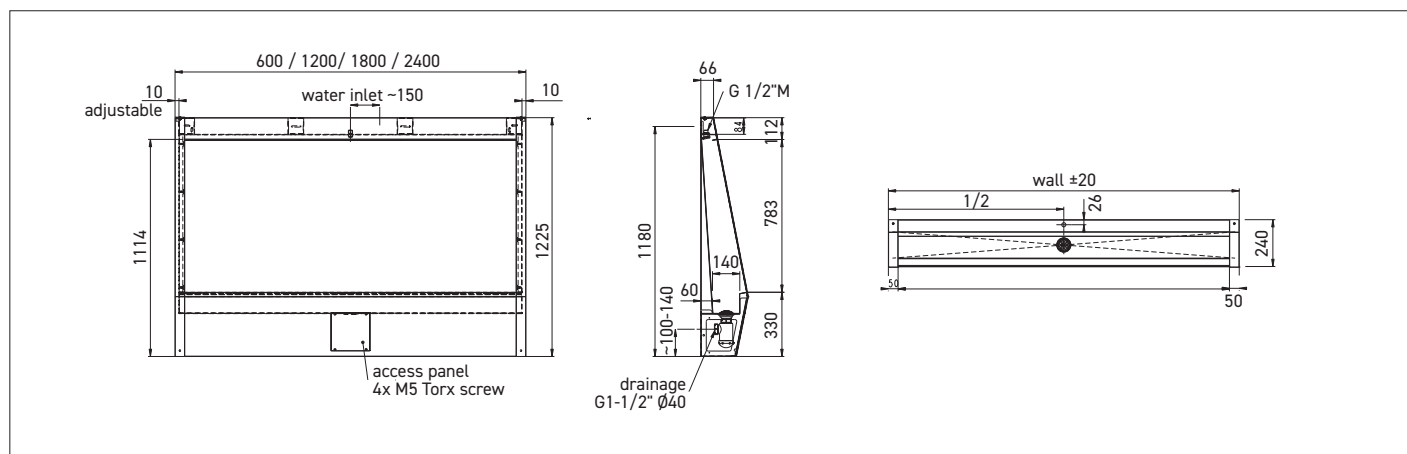
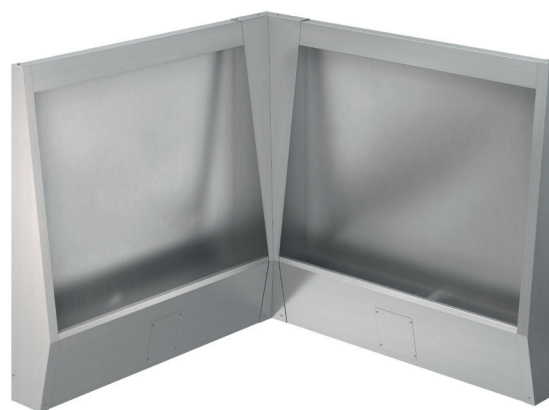
Drainage via central 1 1/2" drain Ø40 mm.

Floor-mounted, accessible trap through access panel.

Dimensions: W600 to 2400 x D240 x H1225 mm.

Complies with CE standards.

10-year warranty.



References

Stainless steel floor-standing urinal through

- **URPX-600P** 600 mm
- **URPX-1200P** 1200 mm
- **URPX-1800P** 1800 mm
- **URPX-2400P** 2400 mm

Options

- Joint cover between stalls (ref. URPX-JP)
- 90° or custom corner cover (ref. URPX-ANGP)
- Side cover when visible side, not installed against wall
- (ref. URPX-LAT-GP left side or URPX-LAT-DP right side)
- Stainless steel separator (ref. URPX-SEPP)