



Stainless steel toilet seat

Reference: **WC-IN**



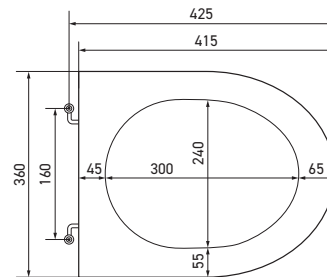
Description

Simple AISI 304 stainless steel seat for stainless steel toilet pan.

D or oval shape depending on the pan model.

Robust and hygienic, it is ideal for high-traffic sanitary spaces and is very easy to clean.

Vandal-proof.



Features

AISI 304 stainless steel, brushed finish.

25 mm thick seat.

Stainless steel hinges.

Fixed hinge fixing spacing 160 mm.

Dimensions: W415 x D25 x H370 mm.



References

Simple stainless steel toilet seat

- **WC-IN** **D shape brushed finish**
- **WC-INO** **oval shape brushed finish**